

1
BED

type your text here

16 Gorham Court, Gorham Way, Peacehaven, BN10 7BB



£1,000 Per Calendar Month

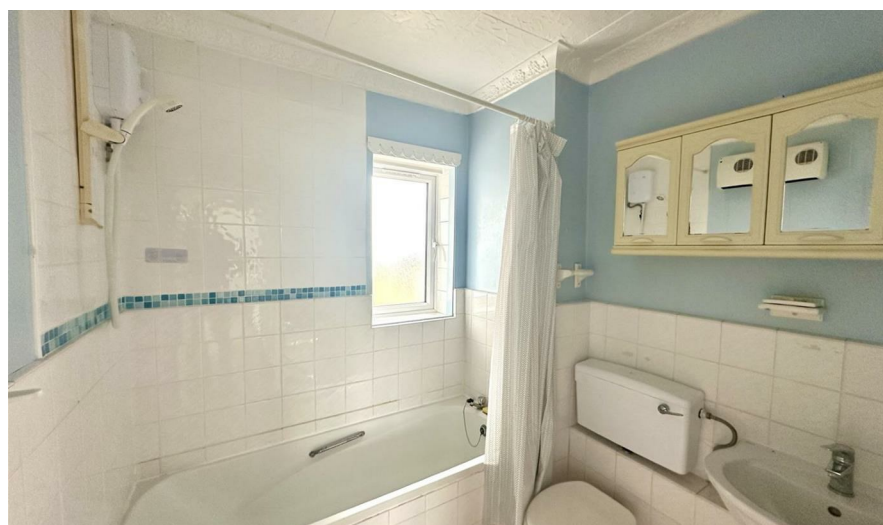
phillipmann
we do more

www.phillipmann.com



inbrief...

Spacious First Floor South Facing 1 Bedroom Apartment which comprises Entrance Hall with ample storage cupboards, Double Aspect Lounge with door onto Balcony enjoying direct sea views and window overlooking Telscombe Tye, Fitted Kitchen with freestanding oven, Good Size Bedroom with range of built-in wardrobes and window overlooking Telscombe Tye, Bathroom/WC. Ideal and favoured location. Must be Viewed. Unfurnished



EPC Rating - E
Council Tax Band - B

moreinfo...

Phillip Mann Lettings Office
16 Bridge Street, Newhaven, East Sussex, BN9 9PJ
01273 517 517

To see more details on this & all our homes go to
www.phillipmann.com

