

2
BED

type your text here

Flat 4 & Garage, Connaught House, Connaught Road, Seaford,
BN12 5DC



£1,300 (From) Per Calendar

.. ..

phillipmann
we do more

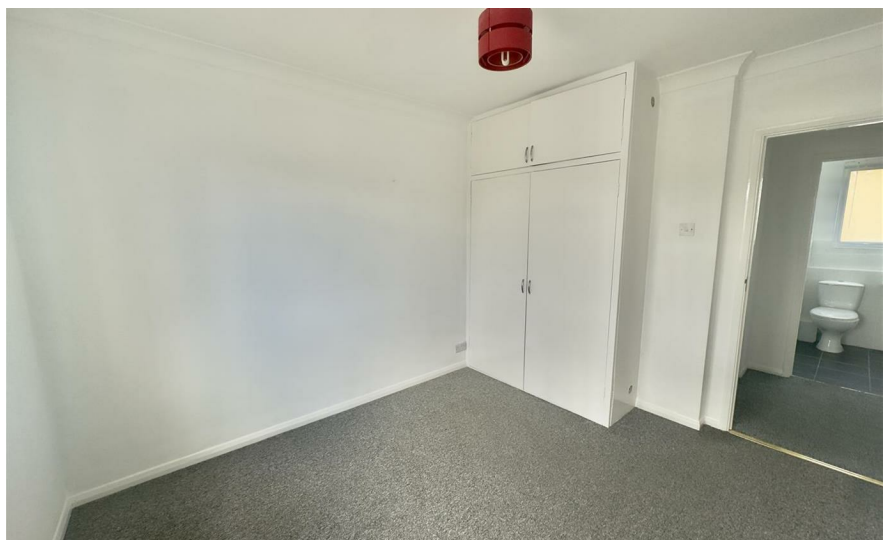
www.phillipmann.com



inbrief...

An opportunity to rent this well presented 2 bedroom apartment. Located on the first floor of this popular purpose built block, which is conveniently situated close to local shops and a regular bus service on Claremont Road, whilst Seaford beach and promenade is within walking distance.

There is a fitted kitchen, white bathroom suite and door entry phone. This flat comes with a Garage - single size located in the Car Park. Must be Viewed Unfurnished



moreinfo...

Phillip Mann Lettings Office
16 Bridge Street, Newhaven, East Sussex, BN9 9PJ
01273 517 517

To see more details on this & all our homes go to
www.phillipmann.com

