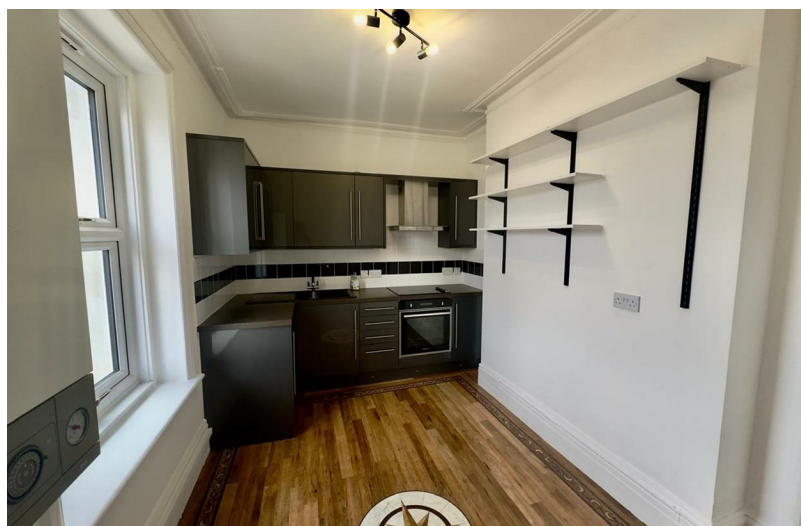


2
BED

type your text here
35c, Esplanade, Seaford, BN25 1JJ



£1,350 Per Calendar Month

phillipmann
we do more

www.phillipmann.com



inbrief...

Superb Seafront Apartment with direct Sea Views and a Parking Space - the flat has very spacious accommodation and is ideally situated within paces of Seaford seafront, easy reach of the Town Centre and railway station. The flat comprises Communal Entrance with Stairs rising to Second Floor, Large Entrance hall, Spacious Lounge with door leading onto Balcony with direct Sea Views, Main Bedroom with direct sea views, Kitchen with range of modern units, window to rear with views over rooftops towards the town and providing ample space for a table, Good Size Second Bedroom also to the rear, Separate WC, Main Bathroom with Bath with telephone style mixer tap, Separate Shower cubicle and WC. Balcony with direct sea views ideal space for enjoying the sun and sea. Unfurnished Available now



moreinfo...

Phillip Mann Lettings Office
16 Bridge Street, Newhaven, East Sussex, BN9 9PJ
01273 517 517

To see more details on this & all our homes go to
www.phillipmann.com

