

2  
BED

# Ground Floor Flat

Flat 2, Kempthorne House, Newhaven, BN9 9NZ

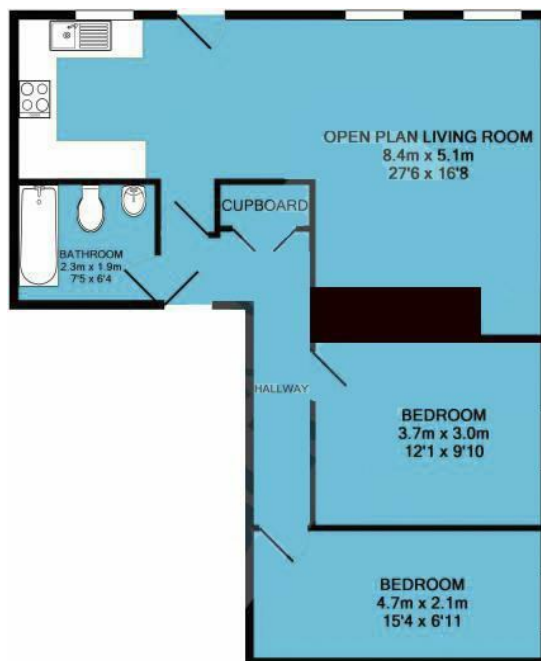


£1,150 Per Calendar Month

**phillipmann**  
we do more

[www.phillipmann.com](http://www.phillipmann.com)





TOTAL APPROX. FLOOR AREA 62.9 SQ.M. (677 SQ.FT.)  
Measurements are approximate. Not to scale. Illustrative purposes only  
Made with Metropix ©2019

## inbrief...

Phillip Mann Estate Agents are pleased to offer this spacious two bedroom flat in a converted Grade 2 listed building. The entrance door leads into the spacious entrance hall with a storage cupboard and access to the remainder of the accommodation. There are two good size double bedrooms that are carpeted. The open plan lounge/kitchen is fitted with a built in oven & hob with space for all appliances. The bathroom is fitted with a bath and shower over, low flush WC and wash hand basin. Parking. Must be viewed. Unfurnished



## moreinfo...



Phillip Mann Lettings Office  
16 Bridge Street, Newhaven, East Sussex, BN9 9PJ  
01273 517 517

To see more details on this & all our homes go to  
[www.phillipmann.com](http://www.phillipmann.com)