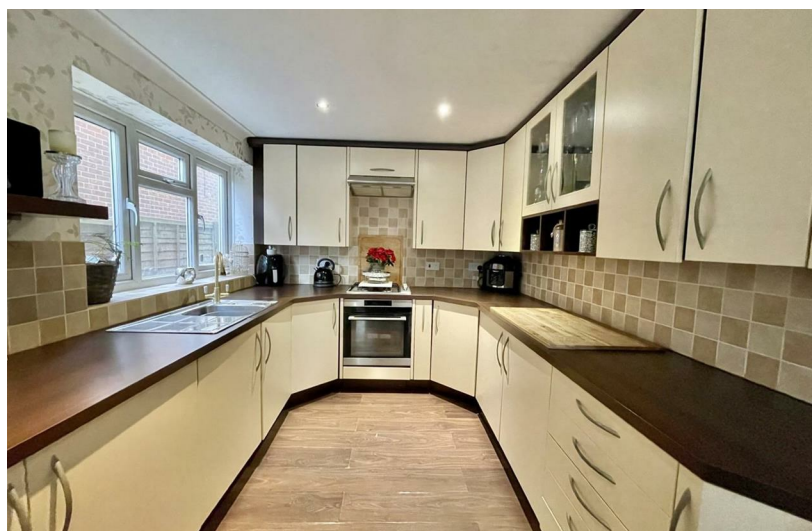


3
BED

Three Bedroom Semi-Detached House - No Chain

25, Valley Road, Newhaven, BN9 9XB

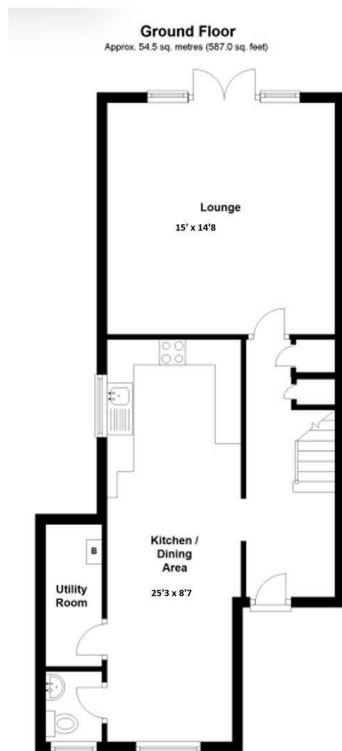


Price £310,000

Freehold

phillipmann
we do more

www.phillipmann.com



inbrief...

Phillip Mann estate agents are delighted to offer this good size three bedroom family house located in Newhaven. The property is being sold with NO ONGOING CHAIN and an internal viewing comes recommended.

A part glazed entrance door gives access to the entrance hall where there is understairs storage and doors which lead to the downstairs accommodation. The kitchen/breakfast room is a lovely bright room which has a range of fitted wall and base units which incorporates a selection of cupboards and drawers. There is a built in sink unit along with a gas hob and electric oven. There are two integrated fridges along with a dishwasher. There is ample space for a dining table and a window overlooks the front of the property. Off the this room there is a utility room with ample appliance space and a downstairs cloakroom. Completing the downstairs is a good size lounge with laminate flooring and patio doors gives access to the rear garden.

The first floor landing has loft space along with doors which lead to the remainder of the accommodation. Bedroom one is a generous room with a range of built in wardrobes and a window overlooks the rear garden. Bedroom two overlooks the front and is a further good size room. Bedroom three is a small double and overlooks the rear. Completing the inside is a family bathroom with a paneled P shaped bath with shower attachment, low level WC and wash hand basin.

Outside there is a good size rear garden which has several different levels along with a lower patio.

The front is arranged as off road parking for several vehicles.



Energy Rating C

Council Tax Band C

moreinfo...



Phillip Mann Newhaven Office
16 Bridge Street, Newhaven, BN9 9PJ
01273 517517

To see more details on this & all our homes go to
www.phillipmann.com