

2  
BED

# Top Floor Flat With Garage - Close To Town

29 Meeching Place, Church Hill, Newhaven, BN9 9LP



Offers Over £185,000

Leasehold - Share of Freehold

**phillipmann**  
we do more

[www.phillipmann.com](http://www.phillipmann.com)



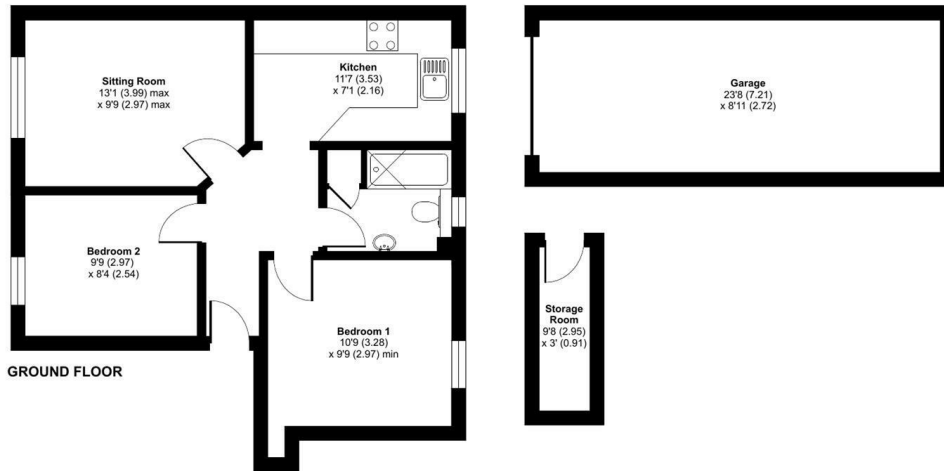
## Meeching Place, Church Hill, Newhaven, BN9

Approximate Area = 742 sq ft / 68.9 sq m (includes garage)

Outbuilding = 29 sq ft / 2.7 sq m

Total = 771 sq ft / 71.6 sq m

For identification only - Not to scale



## inbrief...

Phillip Mann estate agents are delighted to offer for sale this two bedroom top floor flat located within a short walk from Newhaven Town. The property is considered to be in excellent condition and also has the benefit of a double length garage.

The property is accessed via a communal staircase which leads up to the second floor with a private entrance door to the flat.

The entrance hall has access to loft space and doors which lead to the accommodation. The lounge is a good size room which has space for a dining table and a window overlooks the front of the property. A good size kitchen has a range of fitted units to include a selection of cupboards and drawers. A single bowl drainer sink unit is set into rolled edged work surface and there are appliance space to include cooker, washing machine and fridge. The room is complete with part tiled walls, wall mounted boiler and a window which overlooks the rear.

Bedroom one is a good size double with ample space for wardrobes and a window overlooks the rear of the property. Bedroom two is a further double and overlooks the front. Completing the inside is a family bathroom which is fitted with a paneled bath with electric shower over, low level WC and wash hand basin. The room is complete with a built in storage cupboard, part tiled walls and a window.

Outside there is access to a double length garage with a recently fitted up and over door. There is power and lighting. Also there is the bonus of a storage room.

Viewing is highly recommended.



Energy Rating C

Council Tax Band A

moreinfo...



Phillip Mann Newhaven Office  
16 Bridge Street, Newhaven, BN9 9PJ  
01273 517517

To see more details on this & all our homes go to  
[www.phillipmann.com](http://www.phillipmann.com)