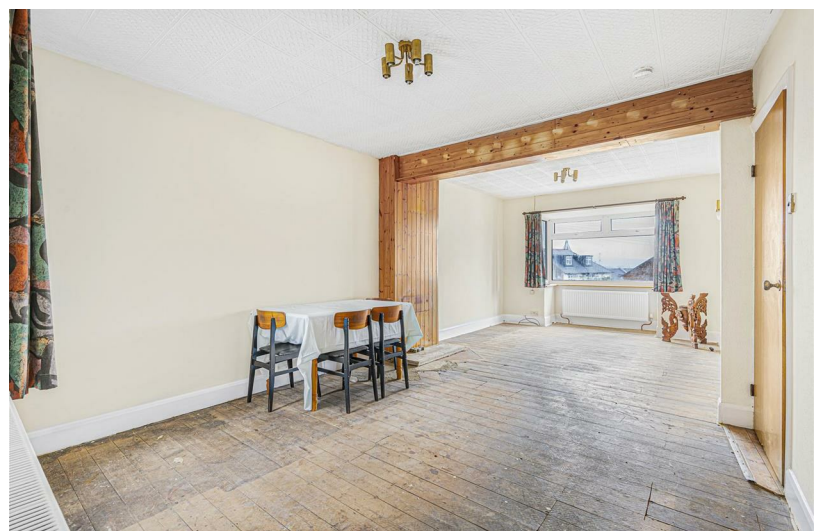


3
BED

Good Size Family House With Large Garden

6, The Rose Walk, Newhaven, BN9 9NH



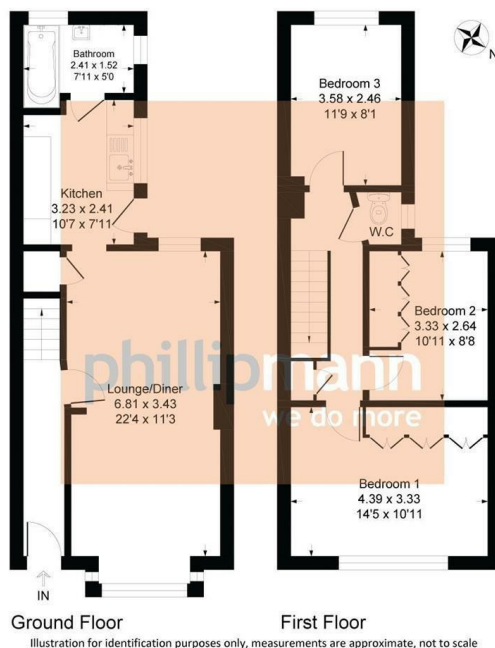
Offers Over £275,000

Freehold

phillipmann
we do more

www.phillipmann.com

6 The Rose Walk, BN9 9NH
Approximate Gross Internal Floor Area = 85.97 sq m / 925 sq ft



inbrief...

Phillip Mann estate agents are delighted to offer for sale this spacious three bedroom house located in a popular close in Newhaven. The property could do with some general updating and is being sold with NO ONGOING CHAIN.

A part glazed door gives access to the entrance hall which leads to the downstairs accommodation. The lounge/diner in a large bright room, there is ample space for a dining table, understairs storage cupboard, a bay window overlooks the front and a window overlooks the rear garden. The kitchen is a good size room with a range of wall and base units which incorporates a selection of cupboards and drawers. There is a built in sink units and ample space for appliances. The room is complete with part tiled walls, wall mounted boiler and a door leads to the rear garden. Completing the downstairs is a family bathroom which has a fitted bath and wash hand basin.

The first floor landing has loft access, storage cupboard and doors which lead to the remainder of the accommodation. Bedroom one is a lovely sized room which has a range of built in wardrobes and a bay window overlooks the front overlooks elevated views towards to The South Downs. Bedroom two is a further double with ample space for wardrobes and a window overlooks the rear. Bedroom three also overlooks the rear garden. Completing the inside is a separate WC.

Outside there is a generous rear garden which is mainly laid to lawn. The garden is fence enclosed and there is rear access.



Energy Rating D

Council Tax Band C

moreinfo...



Phillip Mann Newhaven Office
16 Bridge Street, Newhaven, BN9 9PJ
01273 517517

To see more details on this & all our homes go to
www.phillipmann.com