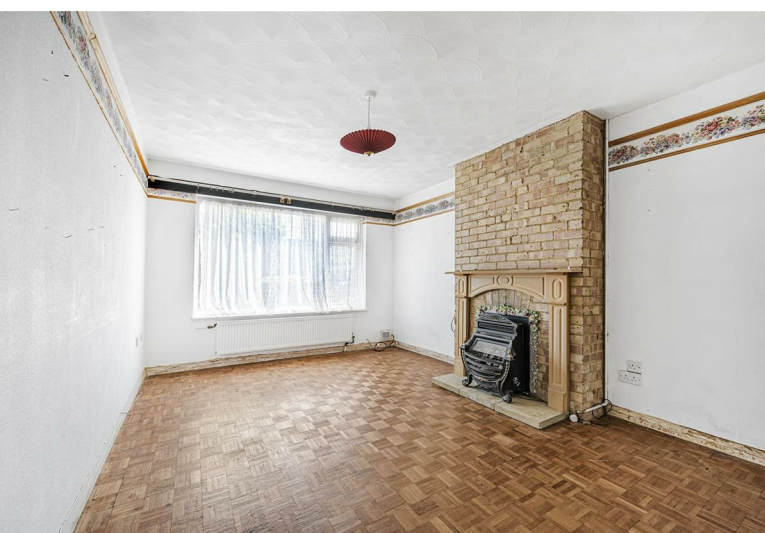


2
BED

A Spacious Two Bedroom Detached Bungalow

18, Court Farm Road, Newhaven, BN9 9DH



Price £319,950

Freehold

phillipmann
we do more

www.phillipmann.com

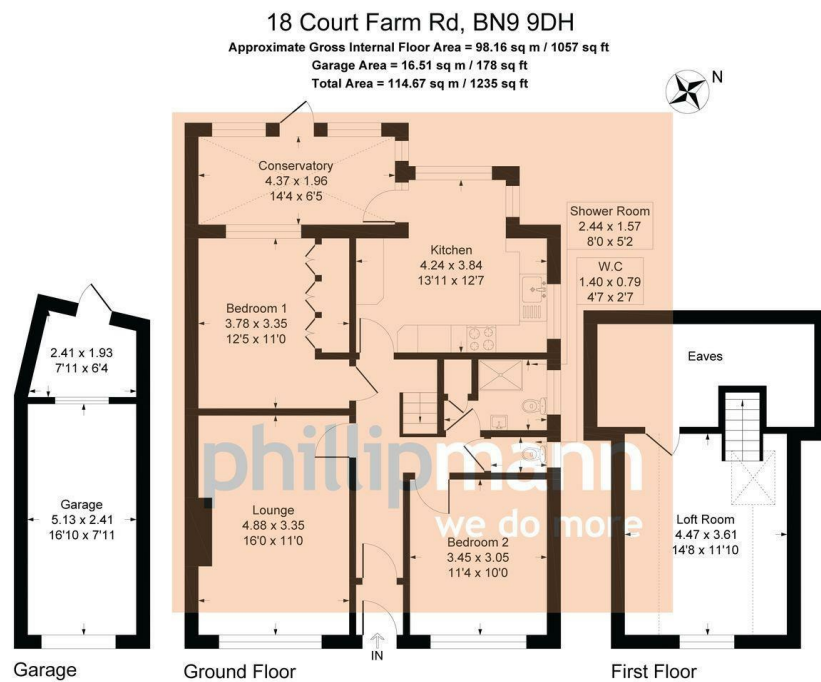


Illustration for identification purposes only, measurements are approximate, not to scale

inbrief...

Phillip Mann estate agents are delighted to offer for sale this spacious two bedroom detached bungalow located in Court Farm Road. The property does require some general updating but has the potential to make a lovely family home.

A part glazed entrance door gives access to a spacious hallway which has doors lead to the accommodation. The lounge is a lovely size room with a feature fireplace, wood flooring and a window overlooks the front of the property. The kitchen/breakfast room is a good size room with a range of wall and base units which incorporates a selection of cupboards and drawers. There is ample appliance space, part tiled walls and ample space for a breakfast table. From here, a door gives access to large conservatory which gives access and overlooks the rear garden.

Bedroom one is a good size room which has a range of built in wardrobes and a window overlooks the front. Bedroom two is a further double which overlooks the rear. There is a shower room which is fitted with a large shower cubicle with a WC and sink unit. There is also the benefits of a separate WC. A large loft area, which could easily be used as further accommodation is access via a fixed staircase which is accessed via the entrance hall.

Outside there is a good size rear garden which has a range of established trees, plants and shrubs.

To the front there is a small garden along with a off road parking and a single garage.

The property is to be sold with NO ONGOING CHAIN.



Energy Rating D

Council Tax Band D

moreinfo...



Phillip Mann Newhaven Office
 16 Bridge Street, Newhaven, BN9 9PJ
 01273 517517

To see more details on this & all our homes go to
www.phillipmann.com