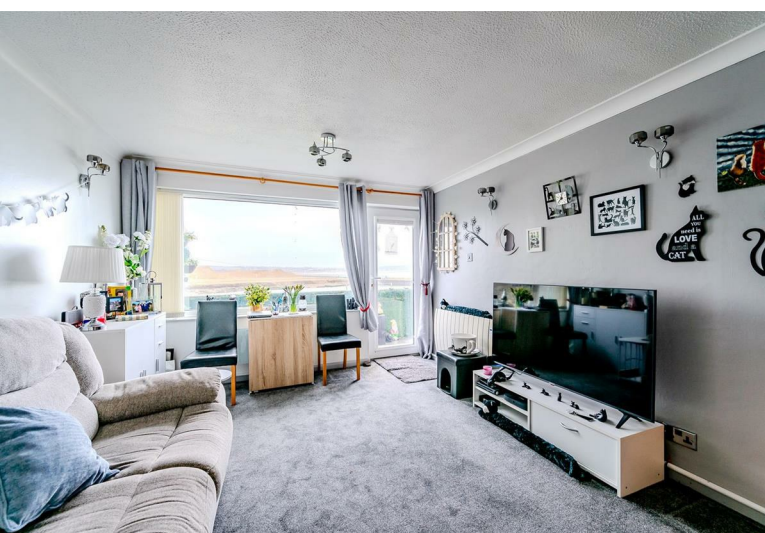


2  
BED

# Waterside Apartment With Double Length Garage

11 Fort Gate, Fort Road, Newhaven, BN9 9DR



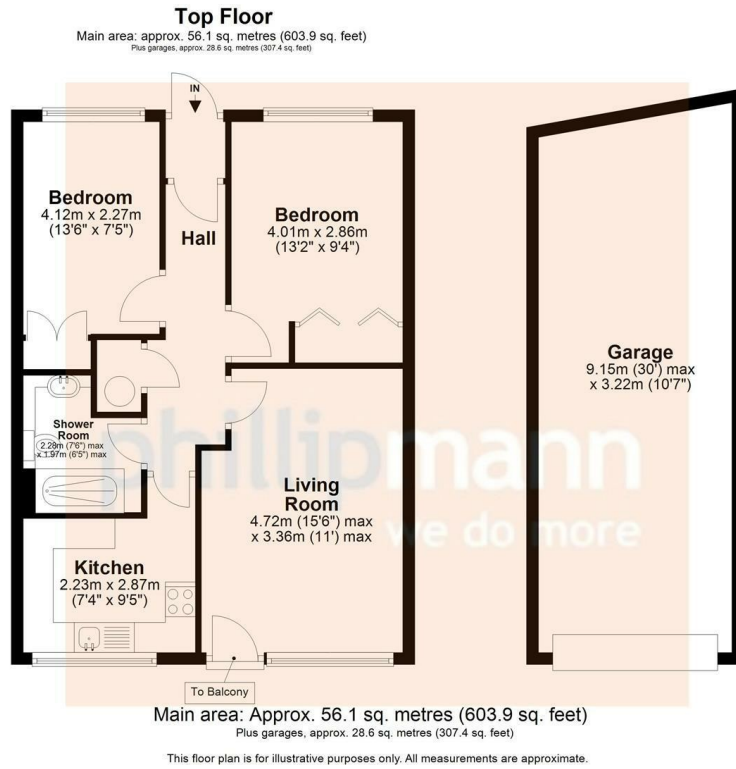
Price £225,000

Leasehold - Share of Freehold

**phillipmann**  
we do more

[www.phillipmann.com](http://www.phillipmann.com)





## inbrief...

Phillip Mann estate agents are delighted to offer for sale this two bedroom purpose built waterside apartment which has the benefits of a double length garage. The property is in excellent order throughout and a viewing is recommended.

A part glazed door gives access to a handy porch area which leads onto the flat. The entrance hall has a built in storage cupboard and doors which lead to the accommodation. The lounge is a generous size room and has a large window overlooking the front which enjoys an absolutely stunning view towards Seaford Bay. There is a door which leads onto a large balcony which again enjoys the views and has plenty of space for a table and chairs.

The kitchen has a range of built in wall and base units which incorporates a selection of cupboards and drawers. There is a built in sink unit and a double oven. There are spaces for fridge, freezer, washing machine and dishwasher. The room is complete with part tiled walls and a large window overlooks the front of the apartment.

Bedroom one is a good size room with ample space for a double bed and there is built in wardrobes. A window completes the room and overlooks the rear. Bedroom two is a further double again with built in wardrobes and a window overlooks the rear.

Completing the inside is a refitted shower room which has a large walk in shower, low level WC and wash hand basin.

There is a double length garage with power and light with an up and over door.



Council Tax Band C

Energy Rating F

moreinfo...



Phillip Mann Newhaven Office  
16 Bridge Street, Newhaven, BN9 9PJ  
01273 517517

To see more details on this & all our homes go to  
[www.phillipmann.com](http://www.phillipmann.com)