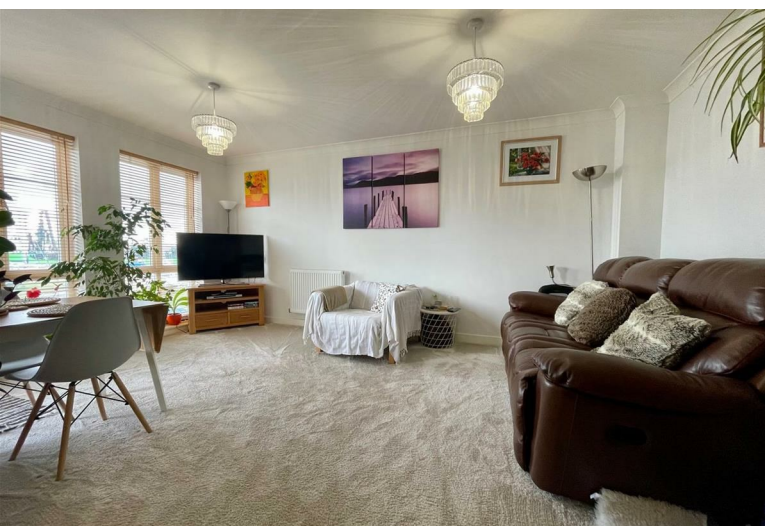


2
BED

Two Bedroom First Floor Flat With Parking

4 Mariners Wharf, Fort Road, Newhaven, BN9 9DU



50% Shared Ownership £105,000

Leasehold

phillipmann
we do more

www.phillipmann.com



inbrief...

Phillip Mann estate agents are delighted to offer for sale this two bedroom first floor apartment located in Mariners Wharf. The property has lovely harbour views and viewings come highly recommended.

A communal door gives access to the communal entrance hall which has stairs leading Flat 4.

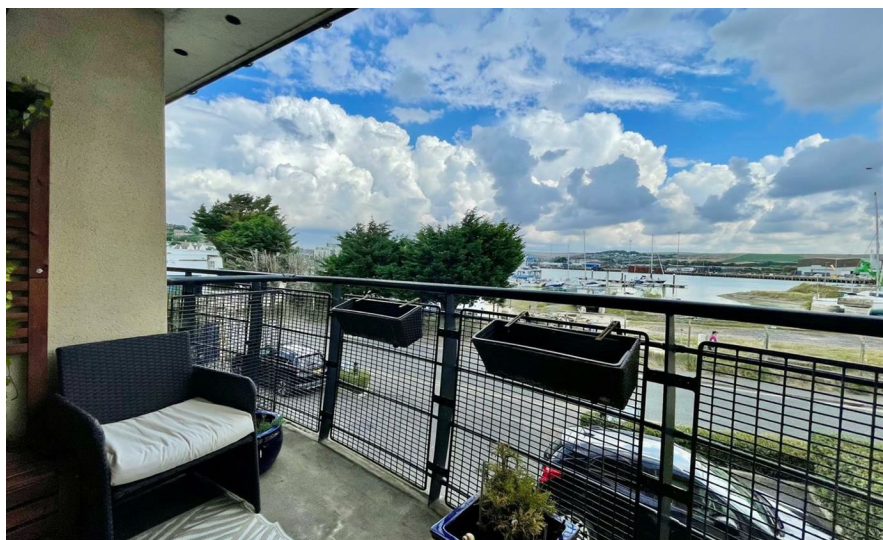
The entrance hall has several storage cupboards and doors which lead to the accommodation.

The lounge is a generous size room which overlooks the front and side offering stunning harbor views. A door gives access to a good size balcony with space for table and chairs and offers stunning views. From the lounge an opening gives access to a modern kitchen which has a range of wall and base units. There is a built in sink unit and appliances to include oven, hob, fridge/freezer, washing machine and dishwasher. The room is part tiled and has a window overlooking the front of the property.

Bedroom one is a good size room with a built in wardrobe and a window overlooking the rear. Bedroom two is a single which overlooks the rear. Completing the property is a good size bathroom which is fitted with a p shaped paneled bath, low level WC and wash hand basin. The room is complete with part tiled walls, heated towel rail and a window to the rear.

Outside there is a allocated parking space

Full Market Value - £210,000
Monthly Rent - £451.00



Energy Rating C

Council Tax C

moreinfo...



Phillip Mann Newhaven Office
16 Bridge Street, Newhaven, BN9 9PJ
01273 517517

To see more details on this & all our homes go to
www.phillipmann.com