

2
BED

Two Bedroom Ground Floor Flat - No Chain

10 Mariners Wharf, Fort Road, Newhaven, BN9 9DU



Offers Over £176,000

Leasehold

phillipmann
we do more

www.phillipmann.com



inbrief...

We are acting in the sale of the above property and have received an offer of £170,500 on the above property.

Any interested parties must submit any higher offers in writing to the selling agent before exchange of contracts takes place

Phillip Mann are delighted to offer for sale this two bedroom waterside apartment situated in a popular purpose built block close to Newhaven Marina.

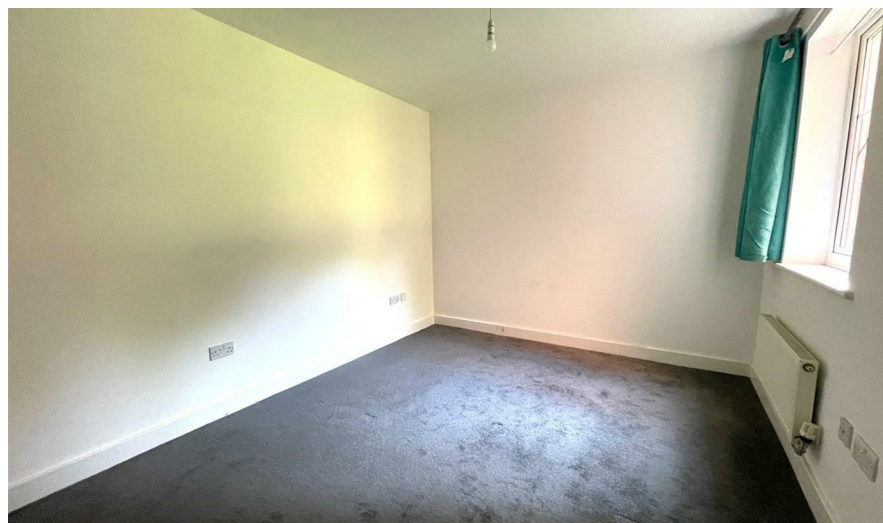
The entrance hall has a built in storage cupboard and leads through into the lounge. This good sized room has space for dining table and double glazed windows overlooks the front of the property with stunning views towards the Marina. The modern fitted kitchen comes off the lounge and is has a range of light fronted wall and base units and has an integrated electric oven, gas hob, fridge/freezer and dishwasher and space for washing machine.

Moving through, the master bedroom is a good sized double with a large cupboard and access to an en-suite. A double glazed window overlooks the rear. Bedroom two is another double room with a double glazed window to the rear.

The bathroom is fitted with a white suite which includes a bath with mixer tap and shower attachment, low flush toilet and wash hand basin. The room is finished off with part tiled walls.

Outside, the property benefits from two allocated parking space.

Lounge/Diner - 17'1 x 9'2
Kitchen 8'11 x 6'4
Bedroom One 11'9 x 9'6
Bedroom Two 11'9 x 9'9



Energy Rating Band C

Council Tax Band C

moreinfo...



Phillip Mann Newhaven Office
16 Bridge Street, Newhaven, BN9 9PJ
01273 517517

To see more details on this & all our homes go to
www.phillipmann.com