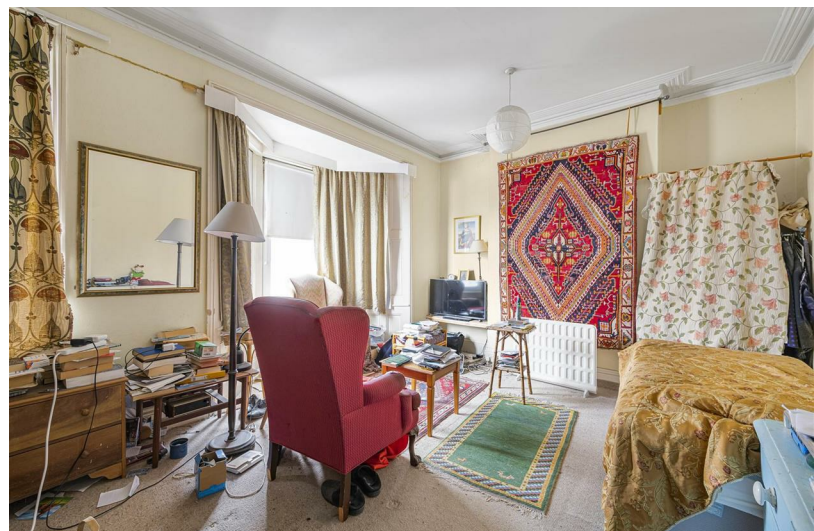


2
BED

Spacious Two Bedroom Maisonette With Garden & Garage

49a, Meeching Road, Newhaven, BN9 9RL



Price £169,950

Freehold

phillipmann
we do more

www.phillipmann.com

49 Meeching Road, BN9 9RL
 Approximate Gross Internal Floor Area = 87.28 sq m / 940 sq ft



Illustration for identification purposes only, measurements are approximate, not to scale

inbrief...

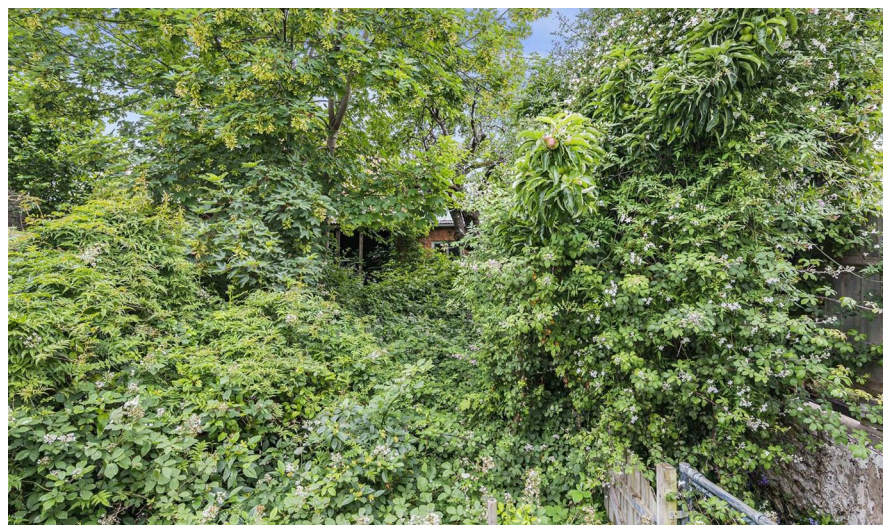
Phillip Mann estate agents are delighted to offer for sale this two bedroom first and second floor maisonette located in Meeching Road. The property could benefit from updating throughout and is being sold with NO ONGOING CHAIN.

A communal entrance door gives access to a communal entrance hall which give access to the apartment. The first floor landing is spacious and has door which leads to the accommodation. The lounge is a lovely bright room which has ample space for a dining table and a bay window overlooks the front. The kitchen/breakfast room has a range of fitted wall and base units which incorporates a selection of cupboards and drawers. There is a built in sink unit and space for appliances. A window overlooks the rear garden. There is a good size utility room which has appliance space, wall mounted boiler, sink unit and a window overlooks the side. Completing this level is a bathroom which has a WC and bath. A Door gives access onto the rear garden.

The second floor landing has loft space, window to rear and doors which lead to the remainder of the accommodation. Bedroom one is a good size room which has ample space for wardrobes and a bay window overlooks the front. Bedroom two is a further good size double and overlooks the rear.

Outside there is a good size rear garden, which is in need of attention, with a gate that leads onto the rear lane. There is also a single garage access via the rear lane.

Viewings come highly recommended to appreciate the size and the potential that this property has to offer.



Energy Rating C

Council Tax Band B

moreinfo...



Phillip Mann Newhaven Office
 16 Bridge Street, Newhaven, BN9 9PJ
 01273 517517

To see more details on this & all our homes go to
www.phillipmann.com