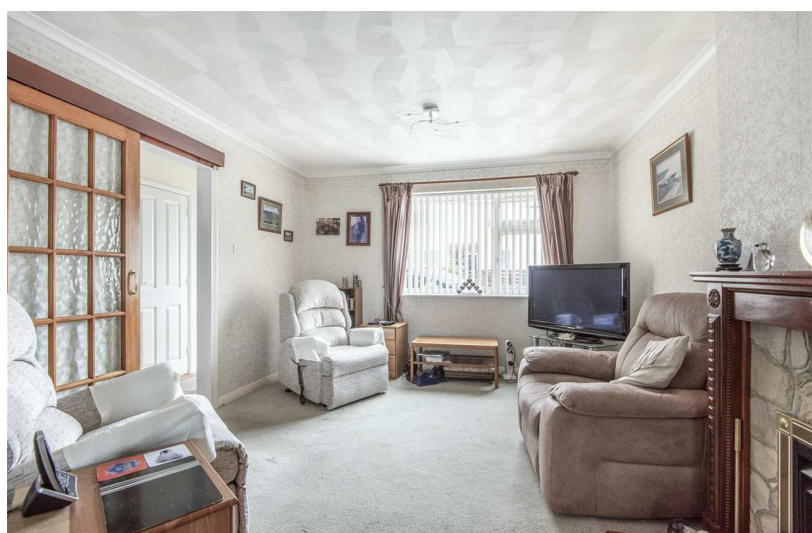


3
BED

Three Bedroom Semi-Detached With Garage

15, Lewis Close, Newhaven, BN9 0RY



Price £269,950

Freehold

phillipmann
we do more

www.phillipmann.com



inbrief...

Phillip Mann estate agents are pleased to offer for sale this three bedroom semi-detached house located in Denton Village. The property has been well maintained over the years and offers parking and a single garage.

The property is accessed via a useful porch which leads onto the entrance hall, there is understairs storage, downstairs cloakroom and door which gives access to the accommodation. The lounge/diner is a generous size room with a feature fireplace with inset gas fire and ample room for a dining table. A window overlooks the front of the property and patio doors give access to the conservatory which overlooks the rear garden.

The kitchen is refitted with a range of white fronted wall and base units which incorporates a selection of cupboards and drawers. A sink unit is set into rolled edged work-surface and there is a built in electric oven and hob. There are spaces for washing machine and fridge/freezer. The room is complete with part tiled walls and a window overlooks the rear of the property.

The first floor landing has access to the loft space and doors give access to the remainder of the accommodation. The master bedroom is a generous size room with built in wardrobes and a window overlooks the front of the property. Bedroom two is a further double which built in wardrobes and a window overlooks the rear garden. Bedroom three is a single with a built in cupboard and a window overlooks the front. Completing the inside is a shower room which is fitted with a shower cubicle, low level WC and wash hand basin.

Outside there is a West facing rear garden which is mainly laid to lawn with flower beds. There is a single garage with power and light which is approached via a driveway which provides parking for several vehicles.



Energy Rating D

Council Tax C

moreinfo...



Phillip Mann Newhaven Office
16 Bridge Street, Newhaven, BN9 9PJ
01273 517517

To see more details on this & all our homes go to
www.phillipmann.com