

3
BED

Spacious Detached Bungalow In Denton - NO

10, Thompson Road, Newhaven, BN9 0RT



Price £340,000

Freehold

phillipmann
we do more

www.phillipmann.com

10 Thompson Road, BN9 0RT

Approximate Gross Internal Floor Area = 90.85 sq m / 978 sq ft
 Garage Area = 16.1 sq m / 174 sq ft
 Total Area = 106.95 sq m / 1152 sq ft

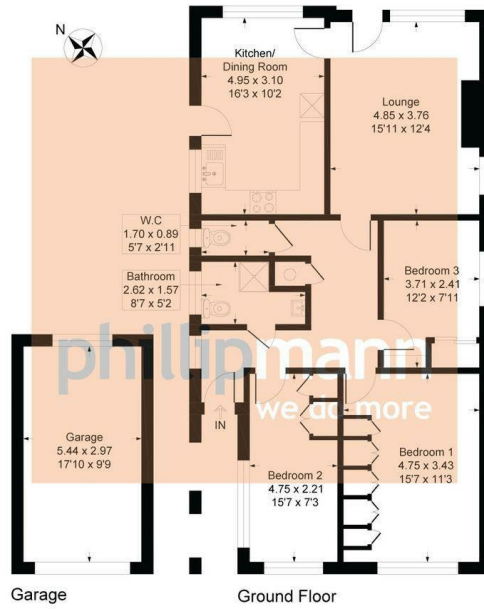


Illustration for identification purposes only, measurements are approximate, not to scale

inbrief...

Phillip Mann Estate Agents are delighted to offer for sale this spacious three-bedroom detached bungalow, ideally situated in the popular Denton village. Offering generous accommodation throughout and being sold with no ongoing chain, an internal viewing is highly recommended.

The accommodation is accessed via a part-glazed entrance door leading into a welcoming entrance hall with loft access, airing cupboard, and doors to all principal rooms. The bright and spacious lounge features an attractive fireplace and enjoys pleasant views over the rear garden.

The kitchen/breakfast room is well-proportioned and fitted with a range of wall and base units incorporating cupboards and drawers, complemented by work surfaces with an inset sink unit. Further benefits include a built-in oven, appliance space, wall-mounted boiler, ample room for a breakfast table, and a window overlooking the rear garden.

There are three good-sized bedrooms. The principal bedroom benefits from a range of fitted wardrobes and overlooks the front garden. Bedroom two is a further double room with a side aspect, while bedroom three enjoys a front-facing outlook and laminate flooring. The accommodation is completed by a modern shower room fitted with a large shower cubicle and wash hand basin, together with a separate WC.

Externally, the property boasts a generous rear garden, predominantly laid to lawn, with a timber shed, greenhouse, and side access. A detached single garage with an up-and-over door provides additional storage and parking.

Denton is a sought-after residential area on the outskirts of Newhaven, offering easy access to local shops, schools, bus routes, countryside walks, and excellent transport links to Brighton, Lewes, and Eastbourne. The nearby South Downs National Park and Newhaven Marina provide a variety of leisure and recreational opportunities.



Energy Rating D

Council Tax Band D

moreinfo...

Phillip Mann Newhaven Office
 16 Bridge Street, Newhaven, BN9 9PJ
 01273 517517



To see more details on this & all our homes go to www.phillipmann.com