

4
BED

Spacious Semi-Detached Chalet - No Chain

16, Willow Walk, Newhaven, BN9 9SS

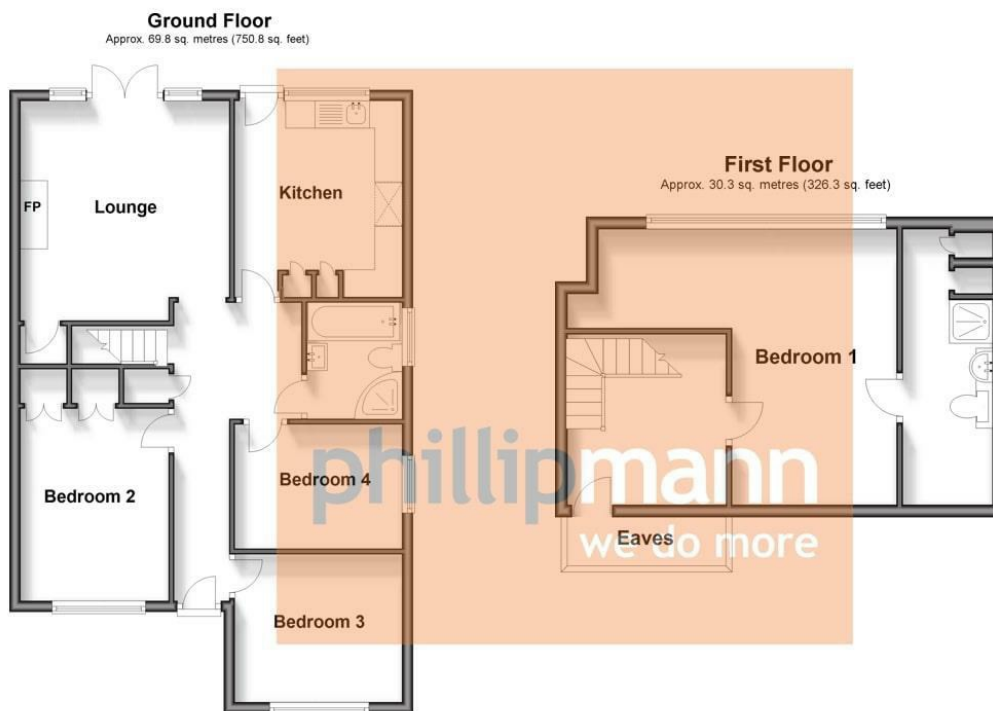


Price £350,000

Freehold

phillipmann
we do more

www.phillipmann.com



inbrief...

Phillip Mann estate agents are delighted to offer for sale this four bedroom semi-detached chalet located in Willow Walk. The property has been much improved over the years and is being sold with no ongoing chain.

A part glazed entrance door gives access to a large entrance hall which has a storage cupboard and doors which lead to the accommodation. The lounge is located at the rear of the property which has a feature wood burner, storage cupboard and patio doors gives access to the rear garden.

The kitchen has been refitted with a range of wall and base units which incorporates a selection of cupboards and drawers. There is a built in sink unit and ample space for appliance. There is also space for a large cooker with extractor hood above. The room is complete with part tiled walls, wood flooring and a door gives access to the rear garden.

Bedroom two is located at the front and is a good size double. Bedroom three and four are also on the ground floor which are both good size rooms. There is also a refitted family bathroom which has a fitted bath, separate shower cubicle, low level WC and wash hand basin. The room is fully tiled and a window overlooks the rear.

Upstairs there is a large master bedroom which overlooks the rear and a door gives access to a ensuite shower room.

Outside there is a large rear garden which is mainly laid to lawn. There is side access and ample parking to the front.



Energy Rating F

Council Tax Band C

moreinfo...



Phillip Mann Newhaven Office
16 Bridge Street, Newhaven, BN9 9PJ
01273 517517

To see more details on this & all our homes go to
www.phillipmann.com