

3
BED

Detached Bungalow in Quiet Location

8, The Close, Newhaven, BN9 0RU

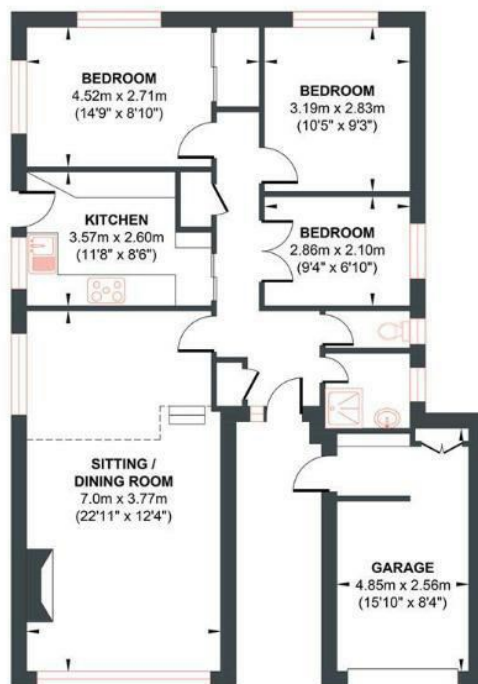


Offers Over £310,000

Freehold

phillipmann
we do more

www.phillipmann.com



GROUND FLOOR

inbrief...

Phillip Mann Estate Agents are delighted to offer for sale this three bedroom detached property situated in a quiet close in Denton Village. The property benefits from gas central heating, double glazing and is being sold with NO ONGOING CHAIN.

The property is accessed via part glazed entrance door leading into entrance hall. The spacious lounge/diner is situated at the front of the property, there is a dining area with step down to generous size living area, this room is carpeted. The kitchen is fitted with a range of light fronted wall and base units incorporating a selection of cupboards and drawers, there is a built in fridge/freezer and space for modern day appliances to include cooker and dishwasher. There are tiled walls and floor and a door gives access to the side and rear garden.

Moving through, the main bedroom is a good size double which benefits from built in wardrobes with mirrored sliding doors and overlooks the rear garden. Bedroom two, another double, is carpeted and overlooks the rear. Bedroom three is a single and overlooks the side. The fully tiled shower room is fitted with corner shower cubicle and wash hand basin. A frosted window overlooks the side. Completing the internal accommodation is a separate cloakroom fitted with low flush WC.

Outside, the low maintenance rear garden is a good size which is mainly laid to patio with flower and shrub borders. The garage is situated at the front of the property, there is side door access with the rear of the garage being used as utility space with plumbing and space for a washing machine and tumble dryer. There is also an up and over door. There is off road parking to the front.



Energy Rating D

Council Tax Band D

moreinfo...



Phillip Mann Newhaven Office
16 Bridge Street, Newhaven, BN9 9PJ
01273 517517

To see more details on this & all our homes go to
www.phillipmann.com