

3
BED

Spacious Victorian House With Off Road Parking

9, Brighton Road, Newhaven, BN9 9NA



Price £315,000

Freehold

phillipmann
we do more

www.phillipmann.com

9 Brighton Road, BN9 9NA

Approximate Gross Internal Floor Area = 100.44 sq m / 1081 sq ft

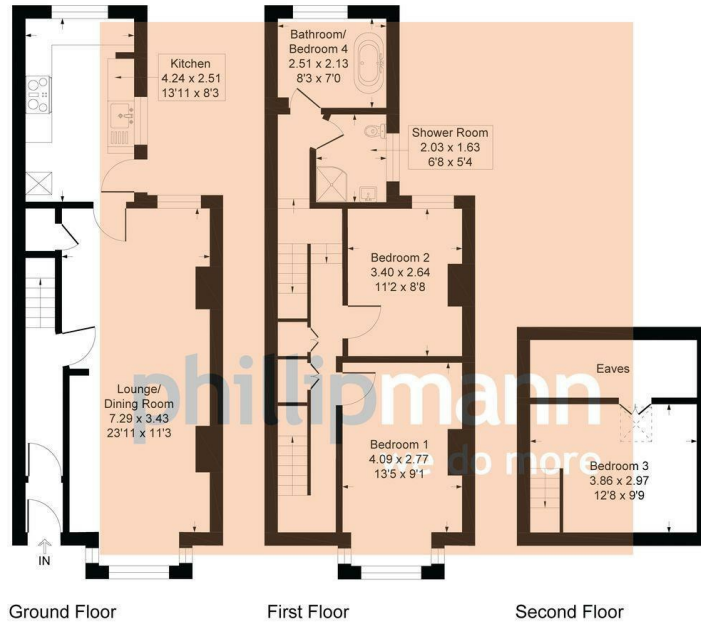


Illustration for identification purposes only, measurements are approximate, not to scale

inbrief...

Phillip Mann estate agents are delighted to offer for sale this three bedroom Victorian house located in a convenient location. The property has been well looked after over the years of ownership and an internal viewings comes highly recommended.

A part glazed entrance door gives access to the entrance hall which has access to the downstairs accommodation.

The lounge/diner is a lovely size room which features from laminate flooring, ample space for a dining table, storage cupboard and a bay window overlooks the front. The kitchen is a further good size room which has a range of wall and base units incorporating a selection of cupboards and drawers. There is plenty of space for appliances and a door gives access to the rear garden.

The first floor landing has several built in storage cupboards and doors gives access to this levels accommodation. Bedroom one is a good size room which has a window overlooking the front. Bedroom two is a further double which has ample space for wardrobes and a window over looking the rear. There is a refitted shower room which has a Quadrant shower cubicle, WC and wash hand basin. Completing this level is a further bathroom which has a rolled top bath. This room was previously a bedroom and could be converted back if needed.

Completing the property is a further bedroom which occupies the who of the second floor which has Velux window and eaves storage.

Outside, there is a low maintenance rear garden along with off road parking.



Energy Rating D

Council Tax Band B

moreinfo...



Phillip Mann Newhaven Office
16 Bridge Street, Newhaven, BN9 9PJ
01273 517517

To see more details on this & all our homes go to www.phillipmann.com