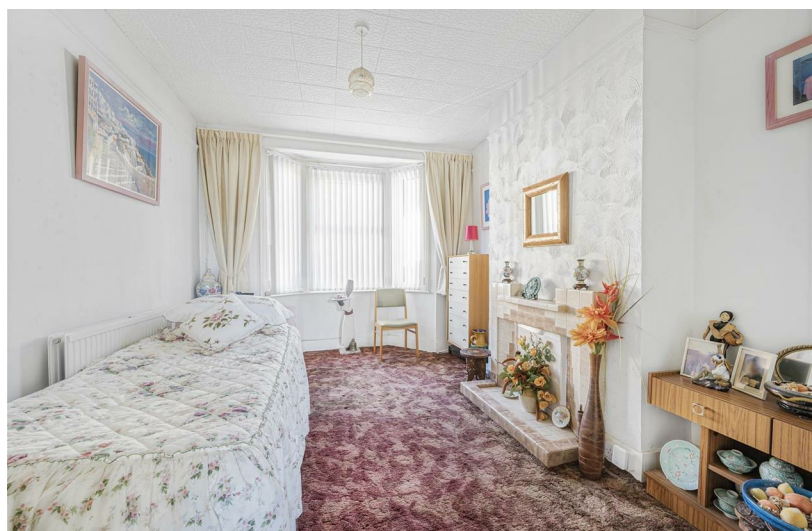


3
BED

Three Bedroom Mid-Terrace House - No Chain

70, Lawes Avenue, Newhaven, BN9 9SB



Price £245,000

Freehold

phillipmann
we do more

www.phillipmann.com

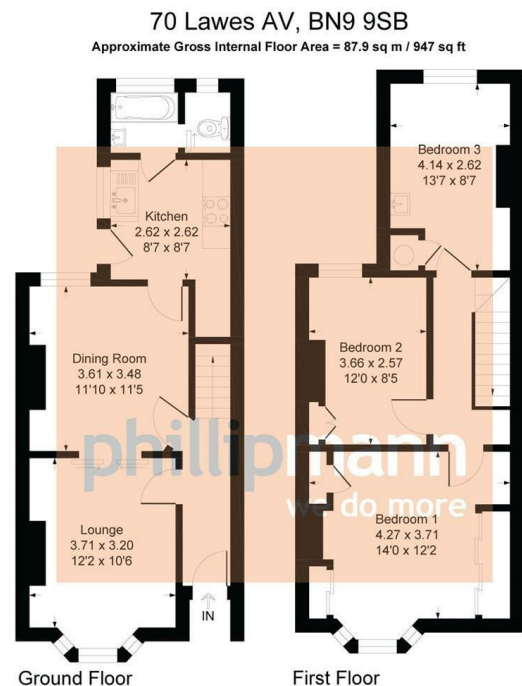


Illustration for identification purposes only, measurements are approximate, not to scale

inbrief...

Phillip Mann estate agents are delighted to offer for sale this spacious three bedroom Victorian house located in Lawes Avenue. The property could do with some general updating and has the potential for off road parking to the rear.

A part glazed door gives access to the entrance hall with doors which leads onto the downstairs accommodation. The lounge is a good size room with a feature tiled fireplace and a bay window overlooks the front. Glazed doors gives access to a dining room which again, has a feature fireplace and a window overlooking the rear garden. The kitchen is fitted with a range of cupboards and drawers along with a built in sink unit. There is a appliance space for cooker, fridge/freezer and washing machine. The room is complete with part tiled walls, wall mounted boiler and a window overlooking the side. Completing the downstairs is a bathroom which has a fitted bath, wash hand basin and w/c.

The first floor landing has loft access and doors which lead to the remainder of the accommodation. Bedroom one is a generous size room with ample space for wardrobes, feature fireplace and a bay window overlooks the front. Bedroom two and three and both further doubles which both overlook the rear.

Outside there is a low maintenance rear garden with a timber shed and rear access. There is the potential for off road parking if needed.

The property is being sold with no-ongoing chain and an internal viewings come recommended to see the potential this property has.



Council Tax Band B

Energy Rating D

moreinfo...



Phillip Mann Newhaven Office
16 Bridge Street, Newhaven, BN9 9PJ
01273 517517

To see more details on this & all our homes go to
www.phillipmann.com