



26 Clayton Road, Newcastle Upon Tyne, NE2 4RP

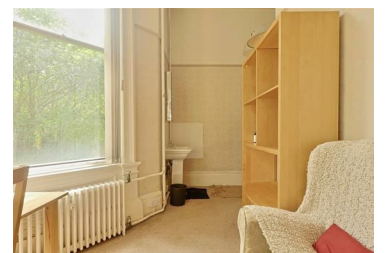
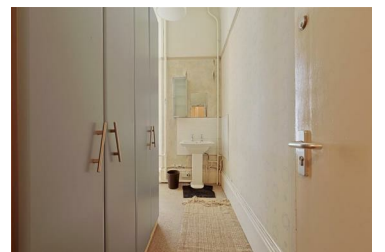
£342 PCM



Available Now | £145pw Bills Included | Room in House Share | 5 Shared Bathrooms | Moments from Jesmond Metro

Bowson presents an individual room within an established 18-bedroom house share in the heart of Jesmond (NE2). The location puts Jesmond Metro, the cafés, bars and restaurants of central Jesmond, and a full run of independent shops and supermarkets within a short walk, with the city centre and the universities only minutes away by Metro. The room must be taken with a bills package included at a total monthly cost of £628pcm

The room suits anyone after a low-maintenance, all-inclusive base in one of Newcastle's best-connected neighbourhoods – students, professionals, and those relocating to the city alike. It offers private living space within a friendly, well-run household, with shared facilities kept to a genuinely usable standard.



- Available Now
- One Bedroom
- £145pw Including Bills
- Fantastic Location
- Council Tax Band G
- Shared House
- Shared Bathroom
- £628pcm Including Bills
- EPC D