



Moore House, 2 Gatliff Road  
London SW1W

GARTONJONES.COM





# Moore House, 2 Gatliff Road London, SW1W

## £1,125 Per Week

GARTON JONES.COM

8 Gatliff Road  
Chelsea  
London  
SW1W 8DP

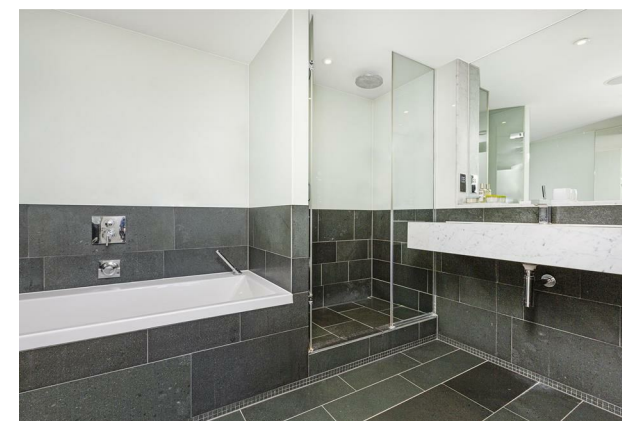
Lettings:  
+44 (0) 20 7730 5007  
gws@gartonjones.com  
www.gartonjones.com

A THREE BEDROOM apartment to rent of approx. 1315sq.ft (122.2sq.m) in Moore House, located close to the banks of the River Thames by Chelsea Bridge. This furnished apartment further benefits from an OPEN PLAN reception room, with access to a balcony, a kitchen with integrated appliances, wood flooring, comfort cooling, an en-suite bathroom plus a separate shower room and excellent storage, including built in wardrobes to the Master bedroom. The property also comes with underground parking. 24 HOUR CONCIERGE, GYM and SPA. On-site Sainsbury's Local, coffee shop and private kids club. SLOANE SQUARE and VICTORIA station with Gatwick Express are within walking distance.

Available via Garton Jones on-site office at Grosvenor Waterside (underneath Bramah House).

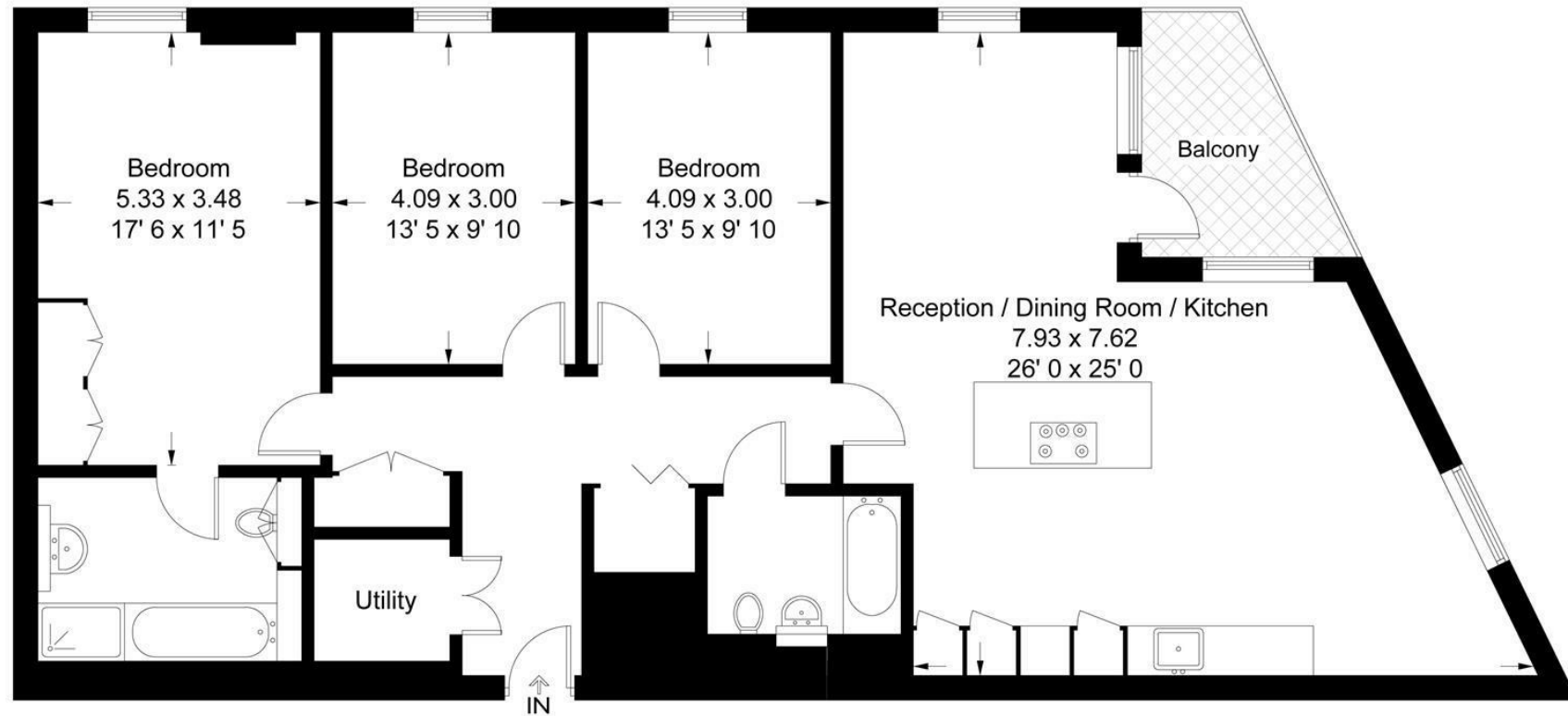
\*Please note furniture may differ to that shown in the current photos.

- 1315sqft (122.2sq.m)
- 3 Double Bedrooms
- 2 Bathrooms (1 en-suite)
- Open Plan Reception Room
- Kitchen with Miele Integrated Appliances
- 24 Hour Concierge
- Secure Underground Parking
- Enclosed Balcony
- On-Site Sainsbury's, Crèche, Coffee Shop & Private Kids club
- Walking Distance to the Amenities & Transport Links of Sloane Square & Victoria Station



## Moore House

Approximate Gross Internal Area = 1315 sq ft / 122.2 sq m



Not to scale, for guidance only and must not be relied upon as a statement of fact  
All measurements and areas are approximate only and have been prepared in  
accordance with the current edition of the RICS Code of Measuring Practice

