



John Islip Street, Westminster
London SW1P

GARTONJONES.COM



John Islip Street, Westminster
London, SW1P

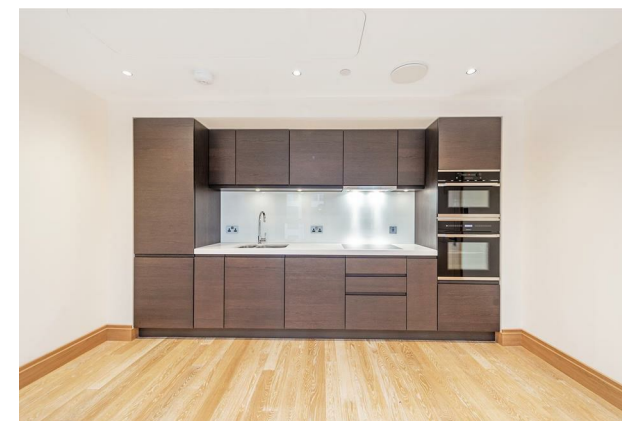
GARTON JONES.COM

49 Marsham Street Lettings:
London +44 (0) 20 7340 0480
SW1P 3DP westminster@gartonjones.com
www.gartonjones.com

£700 Per Week

A 1 double bedroom apartment to rent on the 10th floor (with lift) of this luxury new development close to the River Thames, the Houses of Parliament and Tate Gallery. This furnished apartment measuring at 645 square feet (60 Sq.m) has an open plan reception room with a smart integrated kitchen, storage including built in wardrobes to the master bedroom and a utility cupboard housing a washer dryer, there are a luxury bathrooms, comfort cooling and wood flooring. Residents of Abell House will benefit from a 24 hour concierge service, as well as a health spa with swimming pool and fitness centre and you will be within walking distance to the amenities of Horseferry Road and Victoria Street which include many shops, a Curzon Cinema and a host of new restaurants, namely, Jamie Oliver's Italian, Iberica, Browns, La Tasca, Zizzi and Wagamama to name but a few. The development is also located next door to the international headquarters of Burberry and opposite the Double Tree hotel, by Hilton who also offer in house dining services to Abell House residents. The transport links of St James's Park, Westminster and Victoria are all within walking distance.

- 1 Bedroom Apartment
- 10th Floor (With Lift)
- 645 Square / 60 Sq/M
- Bathrooms
- Open Plan Reception Room
- Kitchen with Integrated Appliances
- 24 Hour Concierge
- Residents Leisure Suite with Gym & Pool
- Close to Local Shops, Restaurants & Transport Links



GARTON JONES.COM



