



Romney House, Westminster  
London SW1P

GARTONJONES.COM



GARTON JONES  
LONDON

# Romney House, Westminster London, SW1P

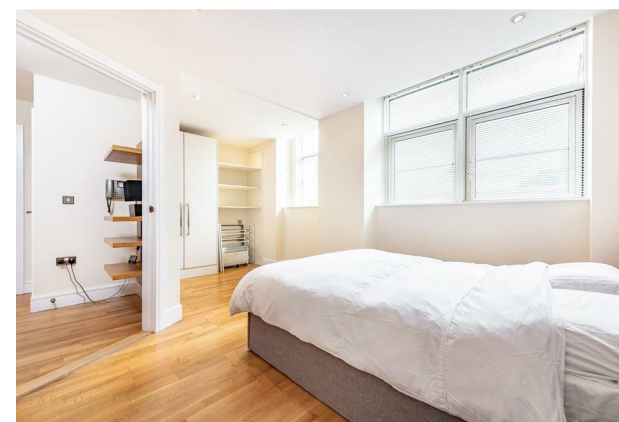
GARTON JONES.COM

49 Marsham Street Lettings:  
London SW1P 3DP +44 (0) 20 7340 0480  
westminster@gartonjones.com  
www.gartonjones.com

## £415 Per Week

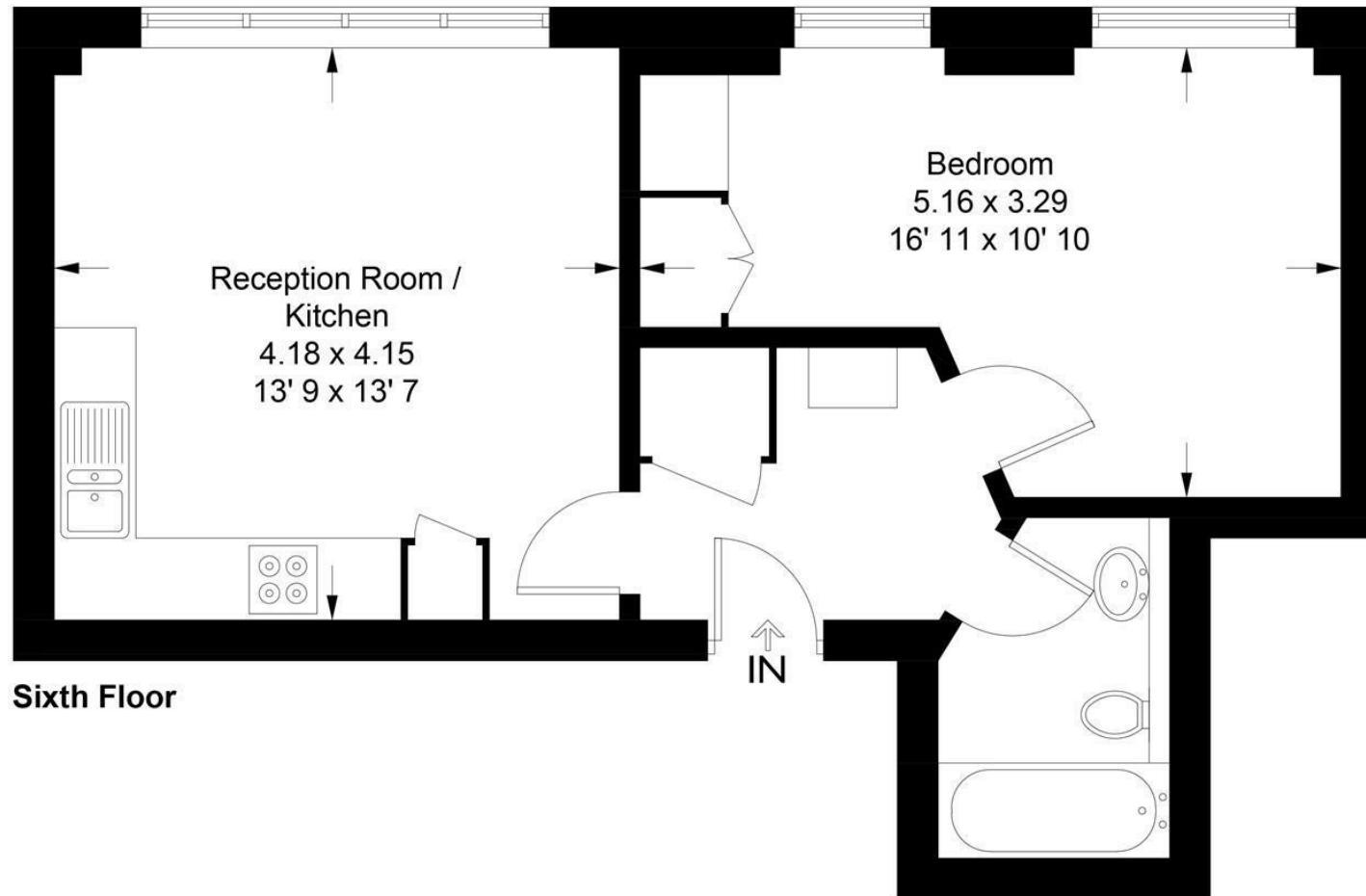
A well presented bright one bedroom apartment in this secure development located in the heart of Westminster. The property has recently been redecorated throughout and newly furnished. The accommodation comprises of an open plan reception room with modern integrated kitchen offering views onto pretty quiet gardens, modern bathroom and a double bedroom with fitted wardrobes and ample working space for a desk if required. As a resident of Romney House you will also have the use of a 24 hour concierge and a well-equipped gymnasium with a sauna and treatment room. Marsham Street is very close to the links of St James's Park, Westminster and Victoria which are all within walking distance. The surrounding area also offers a variety of retail stores, following on from the extensive regeneration of Victoria street a selection of many new restaurants to compliment the selection of existing ones which include Aster, M Victoria, The Ivy Victoria, Flight Club Victoria and many more. Garton Jones' Westminster office is based within the development so are readily available for viewings

- 463 sq.ft (43sq.m)
- One bedroom Apartment
- Open Plan Reception Room
- Fully Integrated Kitchen
- Modern Bathroom
- 24 Hour Concierge
- Secure Underground Parking
- Residents Gym with Sauna & Treatment Room
- Close to Local Amenities Including Shops and Restaurants
- Walking Distance to St James' Park & Westminster Station



## Romney House

Approximate Gross Internal Area = 463 sq ft / 43 sq m



Not to scale, for guidance only and must not be relied upon as a statement of fact  
All measurements and areas are approximate only and have been prepared in  
accordance with the current edition of the RICS Code of Measuring Practice



