



Abady House, Westminster
London SW1P

GARTONJONES.COM



Abady House, Westminster London, SW1P

£400 Per Week

A 2 bedroom apartment available to rent on the 3rd floor (with lift) of this period development in Westminster. This furnished apartment measures at 540sq.ft (50.2sq.m) and further comprises of a reception room, a separate kitchen, wardrobes to both bedrooms, a bathroom and wooden flooring throughout. Page Street is located close to the Tate Gallery, River Thames and Houses of Parliament. Transport links are excellent; the underground stations St James' Park, Victoria, Pimlico and Westminster are all a short walk away. Victoria also has excellent rail and coach links to Heathrow and Gatwick airports. The area has an abundance of amenities including Sainsbury's, Tesco, Waitrose, M&S and a Curzon Cinema. Nearby theatres, bars and restaurants include The Other Place Theatre, Victoria Palace Theatre, Shepherds and Cinnamon Club and numerous other independent restaurants and pubs within walking distance. Garton Jones are located just a few roads away.

- 540 sq.ft (50.2sq.m)
- 2 Bedroom Apartment
- Reception Room
- Separate Kitchen
- Modern Bathroom
- Lift
- Furnished
- Wood Flooring Throughout
- Close to Local Amenities Including Shops, Restaurants & Transport Links
- Walking Distance to Victoria & Westminster Station

GARTON JONES.COM

49 Marsham Street Lettings:

London

SW1P 3DP

+44 (0) 20 7340 0480

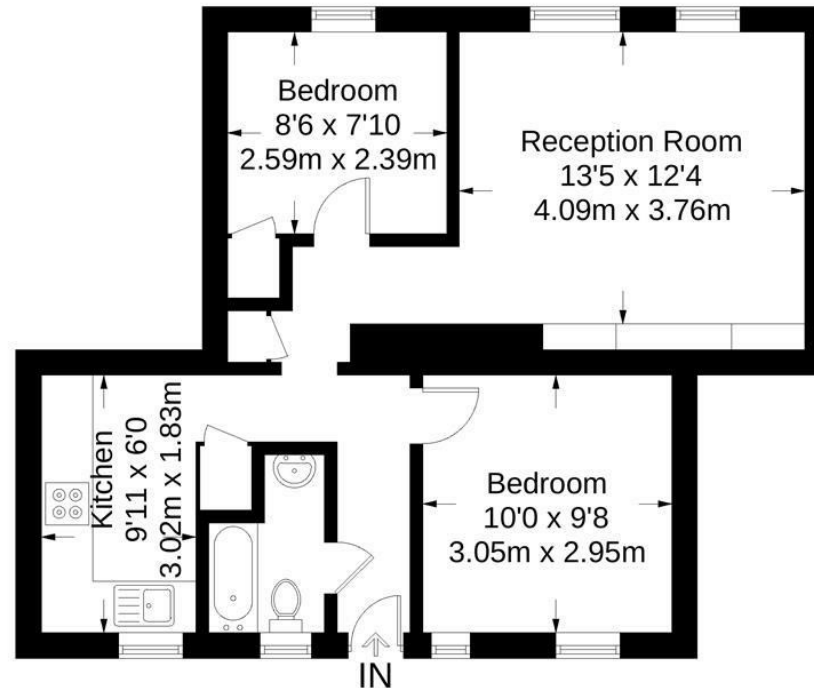
westminster@gartonjones.com

www.gartonjones.com



Abady House

Approximate Gross Internal Area = 540 sq ft / 50.2 sq m



Third Floor

Not to scale, for guidance only and must not be relied upon as a statement of fact.
All measurements and areas are approximate only and have been prepared in
accordance with the current edition of the RICS Code of Measuring Practice.

