



1 Palace Place, London  
SW1E

GARTONJONES.COM



1 Palace Place, London  
, SW1E

GARTON JONES.COM

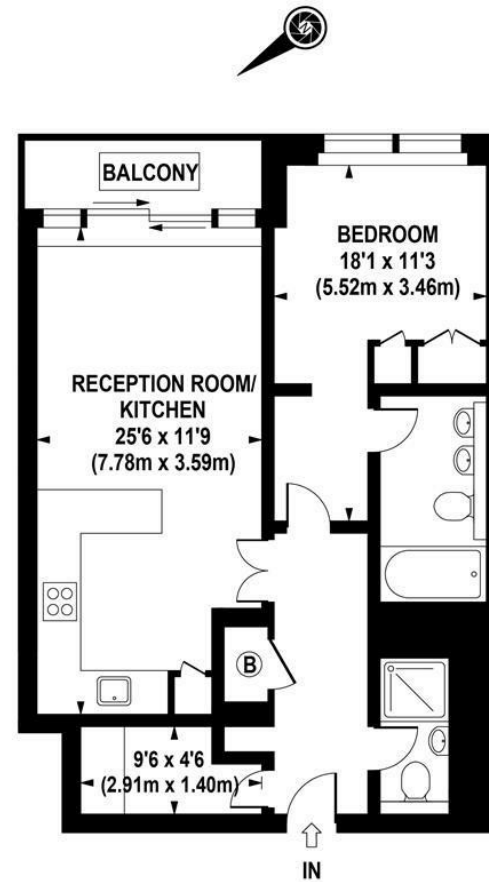
49 Marsham Street Lettings:  
London +44 (0) 20 7340 0480  
SW1P 3DP westminster@gartonjones.com  
www.gartonjones.com

£475 Per Week

A beautifully presented 1 double bedroom apartment to rent of approx. 730sq.ft (67.82 sq.m) on the 4th floor (with lift) of this small and exclusive development located only moments from Buckingham Palace. The apartment has an open plan reception room with solid oak flooring, a modern integrated kitchen, floor to ceiling windows with access to a balcony, an en-suite bathroom, a separate shower room for guests, under floor heating, air conditioning and good storage including built in wardrobes to the bedroom and a large walk-in utility cupboard. Palace Place is exceptionally well located and just a stone's throw from Victoria Station. You are surrounded by an array of iconic London attractions with 2 royal parks and Her Majesty The Queens' Palace at the end of the road. A plethora of hotels, eateries and retail shops which include The Goring, St Ermins', St James Conrad, The Ivy Victoria, Timmy Green, Aster and Flight Club to name just a few. Garton Jones are pleased to confirm that they manage this property and are just a short walk from the development.

- 730sq.ft (67.82 sq.m)
- 4th Floor (with Lift)
- 1 Double Bedroom
- Open Plan Reception Room
- Modern Integrated Kitchen
- 24 Hour Porter
- Balcony
- Underfloor Heating & Air Conditioning
- Close to Local Amenities Including Shops, Restaurants & Transport Links
- Walking Distance to Victoria Station





FOURTH FLOOR

APPROX. GROSS INTERNAL AREA 730 sq.ft / 67.82 sq.m



