



27 Warwick Square, London
SW1V

GARTONJONES.COM



27 Warwick Square, London
, SW1V

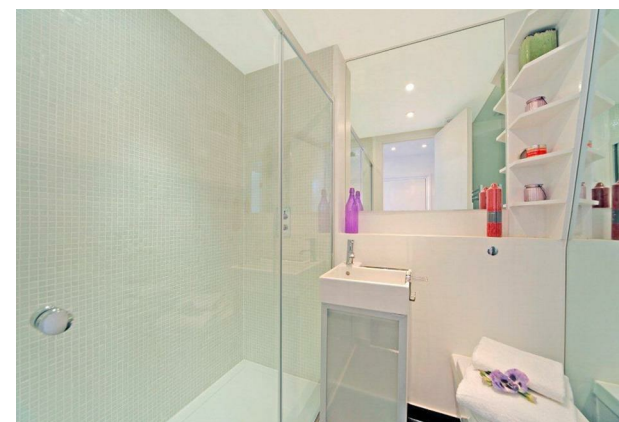
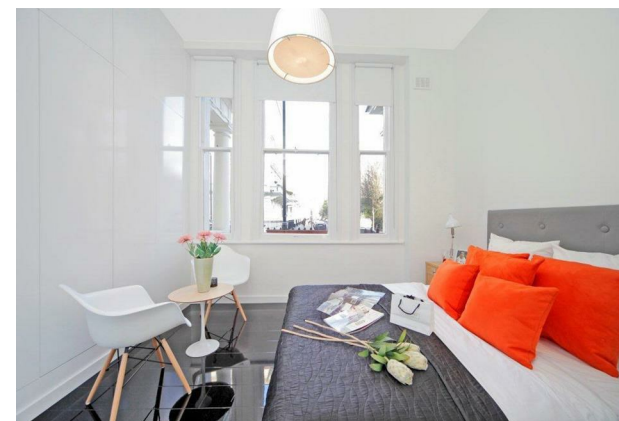
GARTON JONES.COM

49 Marsham Street Lettings:
London +44 (0) 20 7340 0480
SW1P 3DP westminster@gartonjones.com
www.gartonjones.com

£425 Per Week

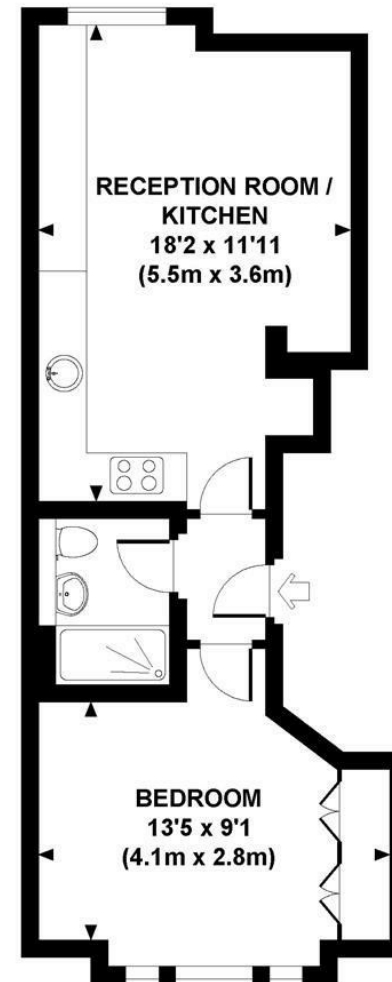
A stunning raised ground floor apartment which has been fully refurbished to a very high standard. Accommodation offers a modern open plan kitchen/reception, large double bedroom with built in storage and a modern bathroom. The property is situated moments from the River Thames and the transport links of Pimlico and Victoria are all within easy reach. The surrounding area offers a variety of retail stores, including the flagship House of Fraser department store and the Cardinal Place Shopping Centre located at Victoria

- 385 sq.ft (35.8sq.m)
- 1 Double Bedroom
- Open Plan Reception Room
- Integrated Kitchen
- Modern Bathroom
- Built-in Storage
- Furnished
- Fully Refurbished To A Very High Standard
- Close to Local Amenities Including Shops and Restaurants
- Walking Distance to Pimlico and Victoria Station



WARWICK SQUARE, SW1X

Approx. gross internal area
385 Sq.Ft. / 35.8 Sq.M.



RAISED GROUND FLOOR

