



Ormond House, Westminster
London SW1P

GARTONJONES.COM



Ormond House, Westminster London, SW1P

£695 Per Week

A well presented, bright three double bedroom apartment located on the of this modern development in the heart of Westminster. The property is offered furnished and has a dual aspect reception room with a separate modern integrated kitchen and access to two balconies, 2 bathrooms (one en-suite) and fantastic storage with fitted wardrobes to all of the bedrooms. Additionally there is a secure underground parking space, wood flooring and a day porter. Ormond House is only moments from the River Thames and other London attractions such as the Houses of Parliament, Big Ben and The London Eye. The transport links of St James's Park, Pimlico, Westminster and Victoria are all within walking distance. The area has an abundance of amenities including Sainsbury's, Tesco, Waitrose, Marks & Spencer's, House of Fraser and a Curzon Cinema plus following on from the extensive regeneration of Victoria street a selection of many new restaurants to compliment existing ones such as The Cinnamon Club, Quirinale and many more.

- 833 sq.ft (77.40sq.m)
- 3 Bedroom Apartment
- Dual Aspect Reception Room
- Separate Integrated Kitchen
- 2 Bathrooms (1 En-Suite)
- 2 Private Balconies
- Day Porter
- Secure Underground Parking
- Close to Local Amenities Including Shops, Restaurants & Transport Links
- Walking Distance to St James Park & Westminster Station

GARTON JONES.COM

49 Marsham Street Lettings:

London

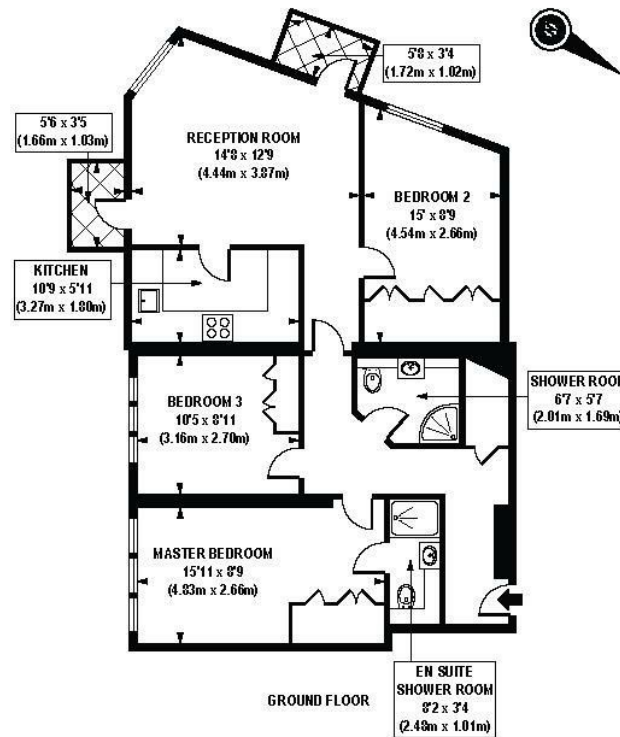
SW1P 3DP

+44 (0) 20 7340 0480

westminster@gartonjones.com

www.gartonjones.com





APPROX. GROSS INTERNAL FLOOR AREA 833 sq. ft / 77.40 sq. m

Floorplan is for illustrative purposes only and is not to scale.
Every attempt has been made to ensure the accuracy of the floorplan shown, however all measurements, fixtures, fittings and data shown are an approximate interpretation for illustrative purposes only.
Liability for errors, omissions or misstatement through negligence or otherwise is hereby excluded.

CPICREATIVE
Property Marketing

