



Ambassador Building, Nine Elms
London SW11

GARTONJONES.COM



Ambassador Building, Nine Elms London, SW11

GARTON JONES.COM

9 Albert
Embankment
London
SE1 7SP

Lettings:
+44 (0) 20 7735 1888
nineelms@gartonjones.com
www.gartonjones.com

£525 Per Week

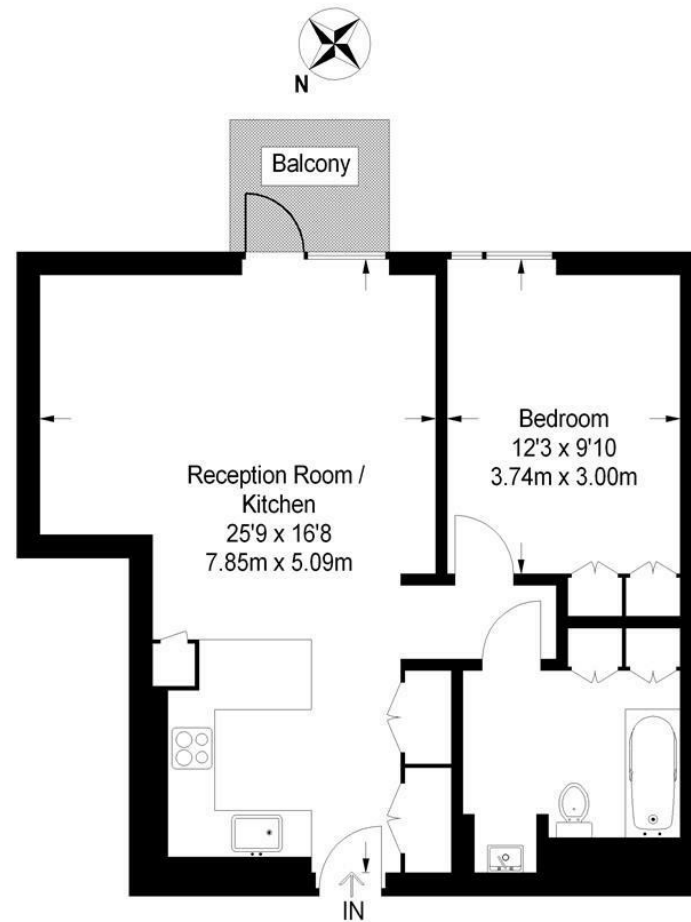
Spacious 1 double bedroom apartment of 564sq.ft (52.4sqm) in the Ambassador Building in Embassy Gardens. This apartment has an open plan reception room with a large balcony offering good views of the linear park. There is a smart integrated kitchen, good storage and a luxury bathroom suite. Interiors will typically boast high ceilings, walnut parquet flooring, marble counter tops in the kitchens and thermostatically controlled comfort cooling and heating. For the residents' private use there will be a 24 hour concierge, cinema, library & lounge, business centre, yoga studio, gymnasium and stunning indoor/outdoor swimming pool.

- 564sq.ft (52.4sq.m)
- 1 Double Bedroom
- Luxury Bathroom Suite
- Open Plan Reception Room with a Smart Fitted Kitchen
- South Facing Aspect
- Parquet Wood Flooring
- Balcony
- Fantastic Views
- 24 Hour Concierge
- Excellent Residents Facilities Including a Cinema, Library, Lounge & Business Centre, Leisure Suite with Gymnasium & Swimming Pool



Ambassador Building

Approximate Gross Internal Area
625 sq ft / 58.1 sq m



Not to scale, for guidance only and must not be relied upon as a statement of fact.
All measurements and areas are approximate only and have been prepared in
accordance with the current edition of the RICS Code of Measuring Practice.

