



55 Northumberland Grove, London, N17 0PY

Asking Price £650,000

This FREEHOLD Mid terraced house stretching over a total square footage of 1138 SqFt. is located a stone throw away from Northumbalend park Station (Great Anglia) offering routes to Liverpool street and Stratford. comprising of 2 kitchens, 2 bathrooms and 4 spacious double bedrooms and 1 single room with a large private garden

The regeneration of Tottenham is starting to come into full affect with the new development of the Tottenham Hotspur stadium and surrounding areas The variety of new builds being constructed and local shops having continuing to increase the value of Tottenham.

For an investor this is a great property to add onto your portfolio with the upcoming regeneration of the Tottenham area. The property has the ideal amount of living space with potential to add more bedrooms to this already licensed HMO with a 2 story extension at the rear of the property.

For families the property has the perfect balance of internal and external spaces. The property can be restructured to suit the needs of your family and is located very close to an array of amenities, great transport links and a variety of outdoor space and activities for kids.

Exterior



Bedroom 1 15'11x10'7 (4.85mx3.23m)



Bedroom 2 12'4x9'8 (3.76mx2.95m)



Bedroom 3 12'4x9'8 (3.76mx2.95m)



Bedroom 4 13'1x12'11 (3.99mx3.94m)

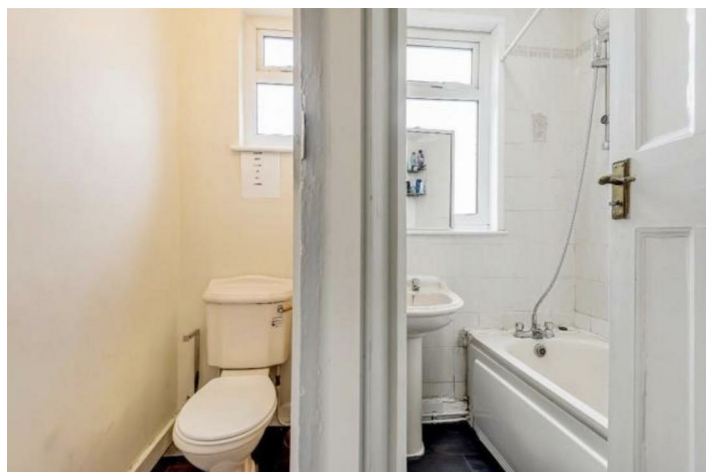


Bedroom 5 10'3x6'8 (3.12mx2.03m)

Kitchen 9'3x6'8 (2.82mx2.03m)



Bathroom



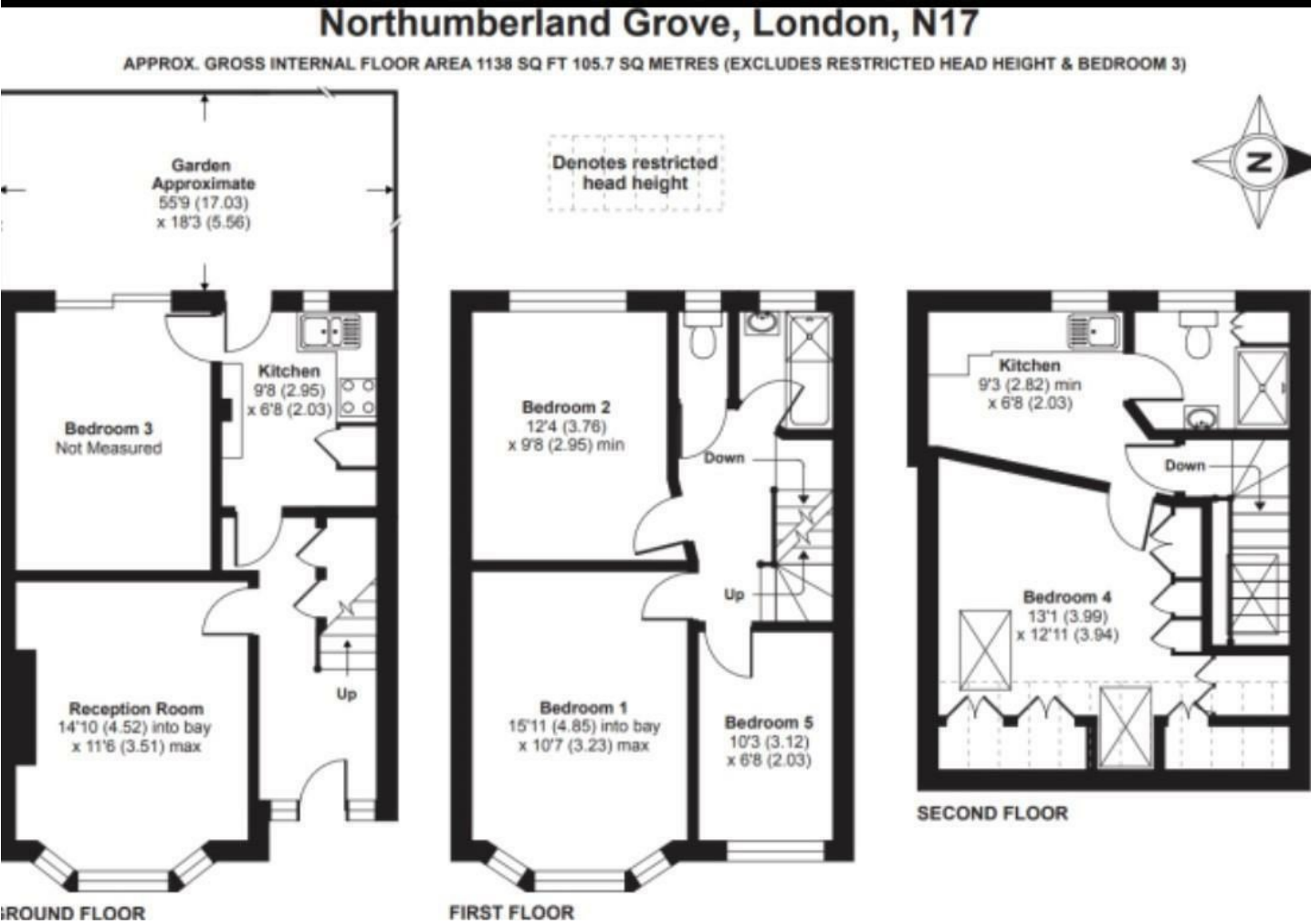
Kitchen 2 9'8x6'8 (2.95mx2.03m)



Garden 310'7" (94.68)



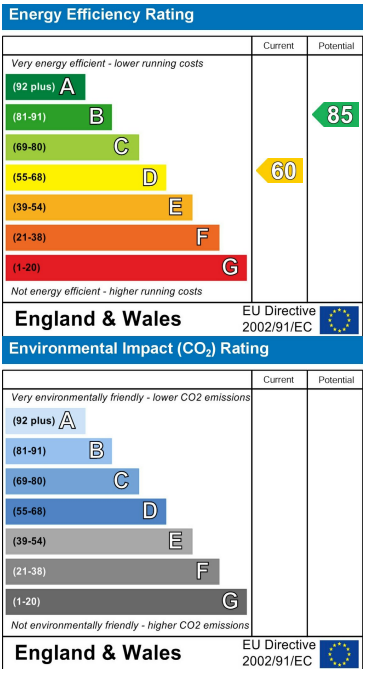
Floor Plan



Area Map



Energy Efficiency Graph



These particulars, whilst believed to be accurate are set out as a general outline only for guidance and do not constitute any part of an offer or contract. Intending purchasers should not rely on them as statements of representation of fact, but must satisfy themselves by inspection or otherwise as to their accuracy. No person in this firms employment has the authority to make or give any representation or warranty in respect of the property.

