



# CARVERS

SALES & LETTINGS

Old Hall Farm Road

St. Helen Auckland, Bishop Auckland, DL14 9EQ

£925 Per calendar month

House - Detached



AVAILABLE 20TH APRIL 2026

Situated in the charming area of St. Helen Auckland, we are pleased to present this delightful three-bedroom detached house on Old Hall Farm Road. This property boasts a well-designed layout that offers both comfort and practicality for modern living.

Upon entering, you are greeted by a welcoming entrance hall that leads to a convenient ground floor WC. The heart of the home is the spacious living dining room, which features an open plan staircase that elegantly connects to the first floor. This area is perfect for entertaining guests or enjoying family time, providing a warm and inviting atmosphere.

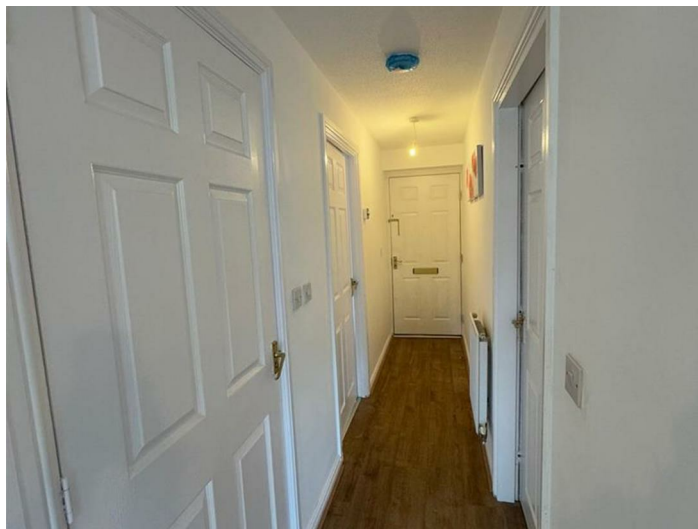
The fitted kitchen is thoughtfully designed, offering ample space for culinary pursuits. Moving upstairs, you will find three well-proportioned bedrooms, including a master suite complete with an en-suite shower room. The family bathroom is also located on this floor, ensuring that all your needs are met.

Externally, the property features a lovely lawn area at the front, complemented by a driveway that provides off-road parking and leads to a garage. Additionally, there is side gated access to a fully enclosed rear garden, ideal for outdoor activities or simply relaxing in a private setting.

This home is perfect for families or anyone seeking a peaceful retreat in a friendly neighbourhood. With its spacious accommodation and convenient location, this property is a wonderful opportunity not to be missed.

Council Tax: C

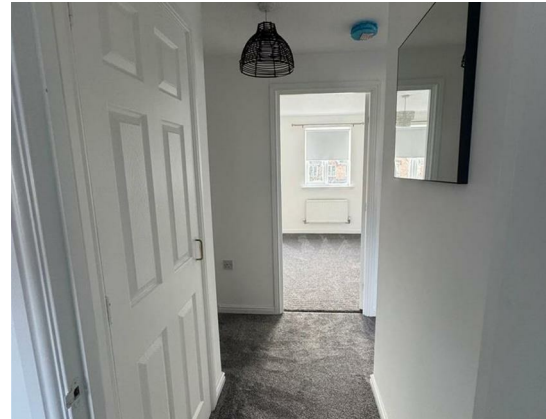
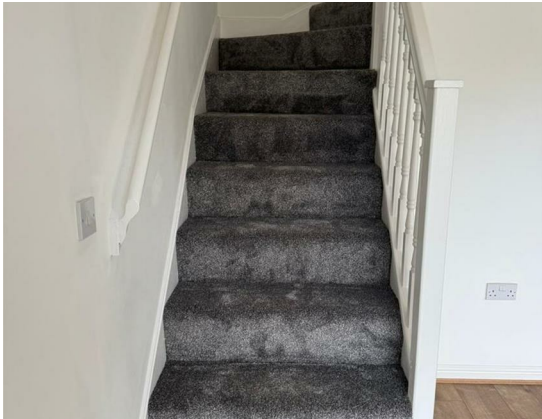
EPC: C

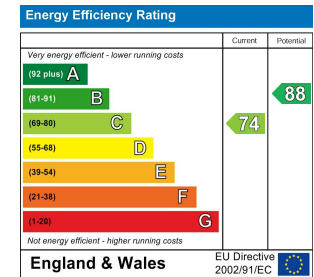


GENERAL INFORMATION

Deposit: 5 Weeks Rent

Local Authority: Durham County Council Band C





Property size taken from EPC sq ft



**Searching 1,000s of mortgages**  
 Access to 12,000+ products from 90+ lenders across the UK.  
 Call: 01325 370341 Visit: Any of our offices  
 Web: [mortgageadvicebureau.com/carvers](http://mortgageadvicebureau.com/carvers)

**Mortgage Advice Bureau**

Your home may be repossessed if you do not keep up repayments on your mortgage.  
 There may be a fee for mortgage advice. The actual amount you pay will depend upon your circumstances.  
 The fee is up to 1% but a typical fee is 0.3% of the amount borrowed.







These particulars do not constitute any part of an offer or contract. None of the statements contained in these particulars are to be relied on as statements or representations of fact and any intending purchaser must satisfy themselves by inspection or otherwise to the correctness of each of the statements contained in these particulars. The vendor does not make or give, and neither Carvers nor any person in their employment has any authority to make or give any representation or warranty whatever in relation to this property.