



A REAL GEM... Pinewood Properties are delighted to offer this superb and well maintained two bedroom semi-detached. This home sits proudly back from the street giving you off road parking and a good size lawn.

On internal inspection you will see that there are two doors that lead into the spacious entrance hall, one from the front and the other from the side, with neutral decor and fitted laminate. The lounge has a spacious feel and has double doors that open to the rear garden.

The kitchen is well stocked and is in a U shape, with walnut colour door and draw fronts, lots of worktop space, integrated hob, extractor and oven.

The first floor has two good size bedrooms, one with fitted wardrobes. Furthermore there is a bathroom with tub and shower taps and a separate WC.

At the rear is an enclosed garden with some patio stone, lawn and outbuildings.

- Two Bedrooms
- Semi-Detached
- Spacious Lounge
- Well Stocked Kitchen
- UPVC
- Gas Central Heating
- Laminate Flooring
- Fitted Carpet
- Enclosed Garden with Outbuildings
- Off Street Parking





Entrance Hall

The entrance hall has dual access with a door to the side and the front. With laminate flooring, dado rail and open spindle and handrail.

Lounge

A spacious lounge with laminate flooring, a feature fireplace with electric fire, uPVC window and double doors that open to the rear garden.



Kitchen

A well stocked kitchen with a good selection of base and wall units with plenty of counter top space. Having a integrated hob, oven and extractor. There is space at the end of the units for a 50/50 style fridge freezer.

Bedroom One

A spacious double bedroom with a UPVC window, central heating radiator, fitted wardrobes and a fitted carpet.



Bedroom Two

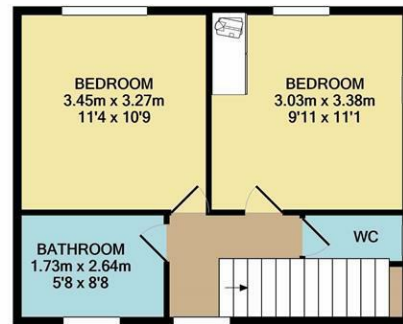
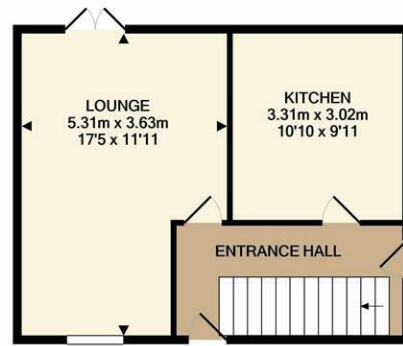
A good size double bedroom with two UPVC windows, neutral decor, a central heating radiator and fitted carpet.

Bathroom

With a bath tub, shower screen and shower off the mixer taps, pedestal wash basin, UPVC window and laminate tile style floor.



PINEWOOD
PROPERTIES
Est. 2004



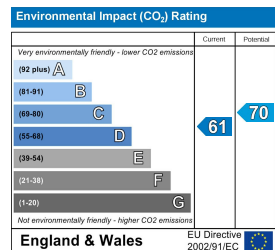
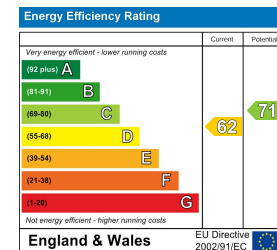
TOTAL APPROX. FLOOR AREA 70.6 SQ.M. (760 SQ.FT.)
Whilst every attempt has been made to ensure the accuracy of the floor plan contained here, measurements of doors, windows, rooms and any other items are approximate and no responsibility is taken for any error, omission, or mis-statement. This plan is for illustrative purposes only and should be used as such by any prospective purchaser. The services, systems and appliances shown have not been tested and no guarantee as to their operability or efficiency can be given
as to their operability or efficiency can be given
Made with Metropix ©2020

WC

A separate WC form the main bathroom.

Outside

A good size garden to the front with lawn and off street parking and an enclosed rear garden with lawn area and outbuildings.



DISCLAIMER

GENERAL - Whilst Pinewood Property Estates endeavour to make our sales particulars accurate they do not constitute or form part of an offer or any contract and none are to be relied upon as statements of representation or fact. Please be advised that some of the particulars may be awaiting vendor approval. If you require clarification or further information on any points, please contact Pinewood Properties, especially if you are travelling some distance to view.

SERVICES, SYSTEMS AND APPLIANCES listed in this advertisement have not been tested by Pinewood Property Estates and no guarantee as to their operating ability or efficiency is given. We strongly advise prospective buyers to commission their own survey or service reports before finalising their offer to purchase.

MEASUREMENTS have been taken as a guide to prospective buyers only, and are not precise. You must verify the dimensions carefully before ordering carpets or any built-in furniture.

FIXTURES AND FITTINGS may be mentioned in the advertisement but all these may not be included in the sale and are to be agreed with the seller.

MONEY LAUNDERING REGULATIONS - Intending purchasers will be asked to produce identification documentation at a later stage and we would ask for your co-operation in order that there will be no delay in agreeing the sale.

You may download, store and use the material for your own personal use and research. You may not republish, retransmit, redistribute or otherwise make the material available to any party or make the same available on any other website

Chesterfield Office

33 Holywell Street
Chesterfield, S41 7SA

sales 01246 221039

lettings 01246 224286

Mansfield Office

24 Albert Street
Mansfield, NG18 1EB

sales 01623 305299

lettings 01623 621001

pinewoodproperties.co.uk

Zoopla.co.uk

rightmove

arla propertymark
PROTECTED

naea propertymark
PROTECTED

The Property Ombudsman

APPROVED CODE
TRADING STANDARDS