

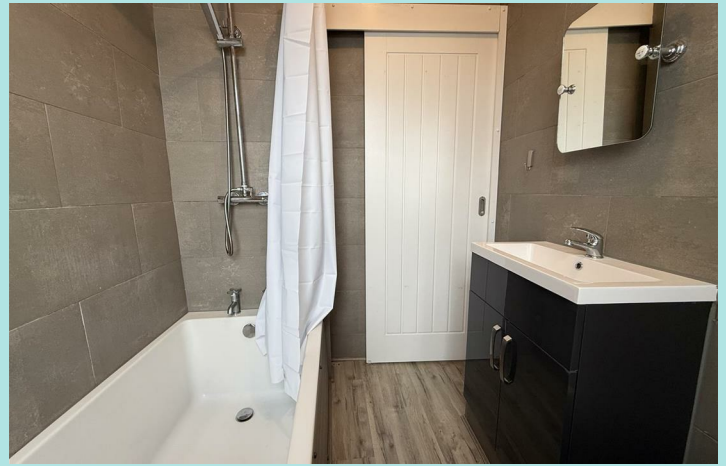


## 47 Lightcliffe Road

Brighouse, HD6 2DJ

**£725 PCM**





#### Summary:

This terrace property provides spacious two bedroomed accommodation with contemporary fixtures and fittings. Situated in the sought after town of Brighouse, home to a wealth of amenities and commuting opportunities. Ideal for a professional individual or couple.

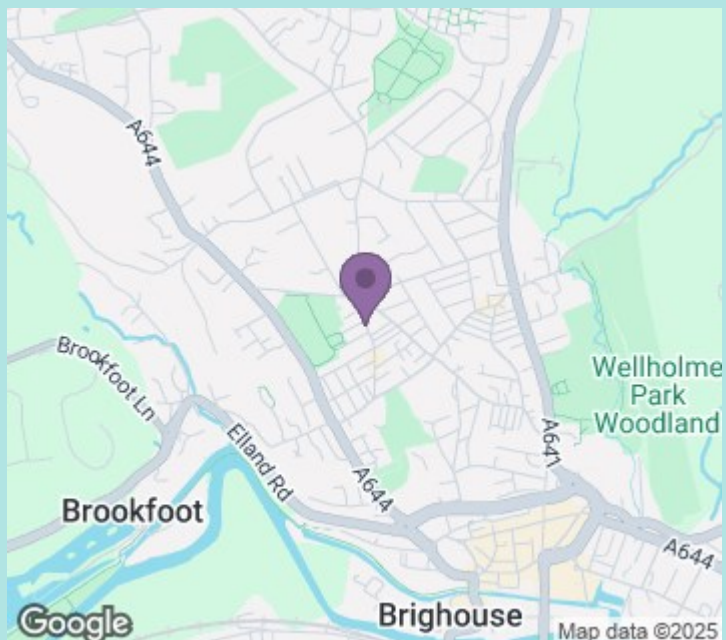
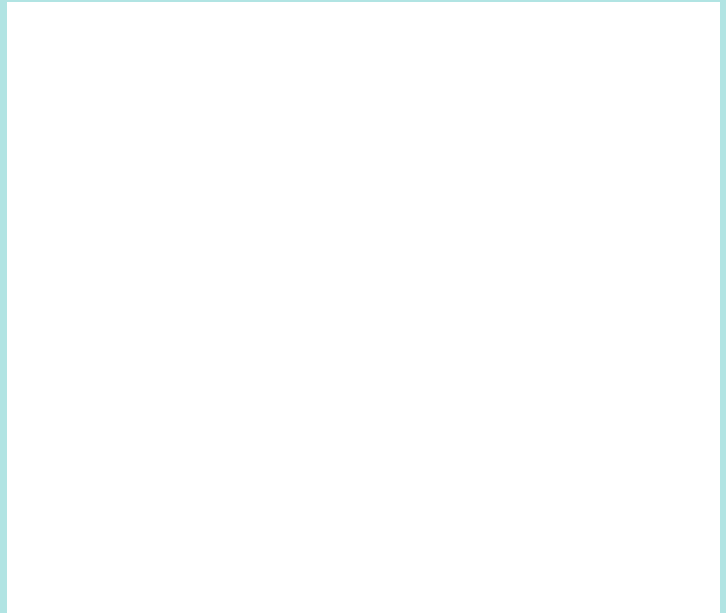
#### Location:

This property is situated on a residential street close to Brighouse town centre which provides a wealth of local amenities from bars, restaurants, convenience stores and wellness facilities. Ideal transport links to the M62 network. Bus and railway stations are located within Brighouse town centre providing excellent commuter links to Huddersfield, Halifax, Bradford and Leeds.

#### Accommodation:

This accommodation briefly comprises; spacious kitchen, having a range of base and wall units with four plate electric cooker, with integrated undercounter fridge and freezer, with the property also benefiting from a dishwasher. The ground floor has the lounge and on the 1st floor is the house bathroom with a modern three piece white suite to include low flush WC, sink basin with under cupboard space, bath with shower. with two double bedrooms.

Council tax band: A  
EPC rating: D  
Deposit: £836



[ws-residential.co.uk](http://ws-residential.co.uk)

01484 711200



These particulars, whilst believed to be accurate are set out as a general outline only for guidance and do not constitute any part of an offer or contract. Intending purchasers should not rely on them as statements of representation of fact, but must satisfy themselves by inspection or otherwise as to their accuracy. No person in this firm's employment has the authority to make or give any representation or warranty in respect of the property.