



Flat 4, 10 Brunswick Square, Brunswick Square GL1 1UG

£160,000



Flat 4, 10 Brunswick Square, Brunswick Square GL1 1UG

- No onward chain
- Top floor two bedroom duplex apartment
- Stunning dual aspect views across Brunswick Square & towards Gloucester Cathedral
- Access to the communal gardens of Brunswick Square
- Grade II listed building
- EPC rating D60

£160,000

Accommodation

Enter the Grade II listed Georgian property into the communal hall where the stairwell leads to the apartment on the second floor. Upon entering, the light and airy hallway provides access to the family bathroom and the fitted kitchen benefiting from integrated four ring gas hob, electric oven and washing machine whilst offering views towards the Historic Gloucester Cathedral in the distance. The first floor of the apartment is completed by a double bedroom and generous sized lounge with feature fireplace and views over the communal gardens of Brunswick square. The stairwell from the hallway leads to the master bedroom with built in wardrobes and offering plenty of natural light via the dual aspect windows completing the property

Location

Tucked away in the quiet location of Brunswick Square, the characterful Georgian townhouse overlooks the square gardens with residential permit parking surrounding.

Approximately quarter of a mile from the City Centre Gloucester offers various amenities, shopping and transport facilities throughout whilst The Gloucester Quays development offers a range of restaurants, cinema and bars only half a mile.

Local Authority & Services

Gloucester City Council - Tax Band A.
Mains water, drainage, electric and gas.

Tenure

Leasehold with long lease in excess of 900 years. Vendor advises there are no service charges and the 4 owners split costs for any maintenance required.

Information correct as of 26/1/22



Unit C Barge Arm East, Gloucester Docks, GL1 2DG

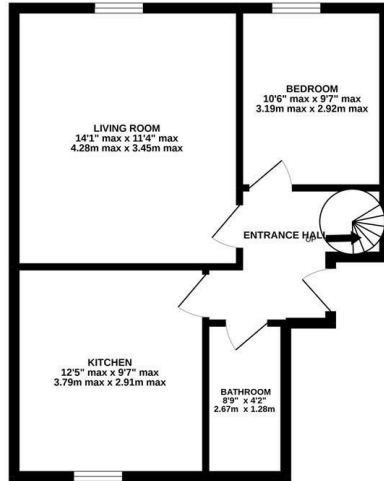
01452 398010

docks@naylorpowell.com

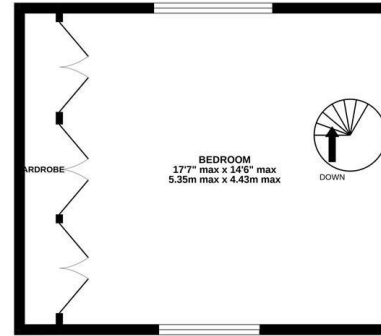
www.naylorpowell.com



GROUND FLOOR



1ST FLOOR



Whilst every attempt has been made to ensure the accuracy of the floorplan contained here, measurements of doors, windows, rooms and any other items are approximate and no responsibility is taken for any error, omission or mis-statement. This plan is for illustrative purposes only and should be used as such by any prospective purchaser. The services, systems and appliances shown have not been tested and no guarantee as to their operability or efficiency can be given.
Made with Metropix ©2022

Disclaimer: These particulars do not form part of any contract and no responsibility is accepted for any errors or omissions in any statement made, whether verbally or written for or on behalf of Naylor Powell.

Floorplans have been prepared for identification purposes only, they are not to scale and no guarantee can be given as to their accuracy.

Prospective purchasers please be aware none of the appliances, boiler, heaters etc. which may have been mentioned in these particulars have been tested and no guarantee can be given that they are in working order. Prospective purchasers should arrange for such items to be tested at their own expense.

