



6 Brunswick Square, Gloucester GL1 1UG
£135,000



6 Brunswick Square, Gloucester GL1 1UG

• No onward chain • One bedroom second floor apartment • Character features throughout • Situated in the popular area of Brunswick Square • Envious views across Brunswick Square gardens • Potential rental income of £750 pcm • EPC rating C71 • Gloucester City Council - Tax Band A (£1,492.52 per annum) 2025/2026

£135,000

Hallway

Stepping into the apartment the hallway provides access to the kitchen living room, bathroom and bedroom.

Kitchen Living Room

Spacious living area with original character features to include picture rails, coving and two sash windows overlooking the well kept Brunswick Square gardens. The kitchen area is a generous size and benefits from ample storage in a range of floor and eye level units accompanied by integrated appliances to include electric oven with four ring electric hob and extractor over. Further space for fridge freezer and plumbing for washing machine.

Bedroom

Double bedroom with sash window to the rear aspect.

Bathroom

White suite comprising WC, wash hand basin and double width shower enclosure with tiled surround. Frosted window to rear aspect.

Outside

To the front of the property is on the street permit parking of which permits can be purchased through the Gloucestershire council website. Situated in the middle of Brunswick Square, the pleasant and well maintained garden is available for the exclusive use of residents only.

Location

Tucked away in the quiet location of Brunswick Square is this characterful apartment. Approximately quarter of a mile from the City Centre Gloucester offers various amenities, shopping and transport facilities throughout whilst The Gloucester Quays development offers a range of restaurants, cinema and bars only a short walk away.

Material Information

Tenure: The property is currently freehold and the owner is in the process of creating a lease for each apartment to accompany the sale. Each apartment will own a share of the freehold. More details to follow.

Information correct as of 08/07/25

Grade II listed

Local authority and rates: Gloucester City Council - Tax Band A (£1,492.52 per annum) 2025/2026

Electricity supply: Mains

Water supply: Mains

Sewerage: Mains

Heating: Gas central heating

Broadband speed: Basic 16 Mbps, Superfast 80 Mbps,

Ultrafast 1000 Mbps- Highest available download speed

Mobile phone coverage: Three, 02

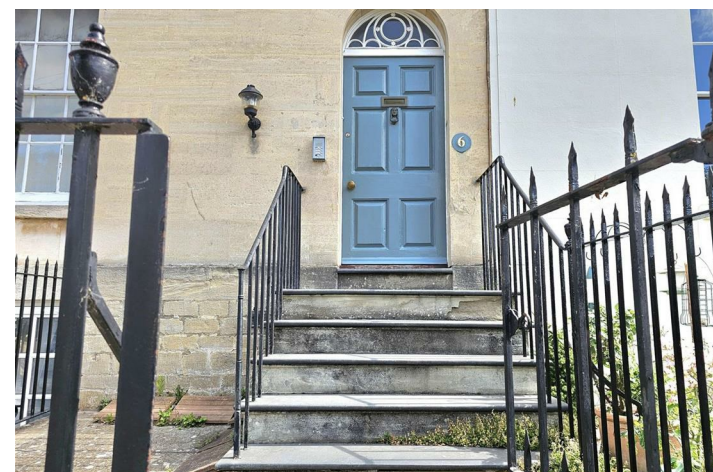


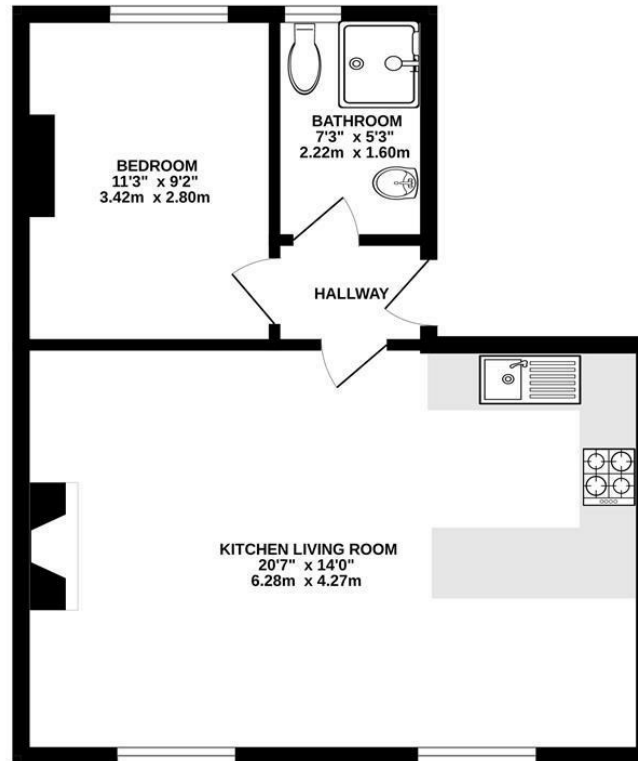
Unit C Barge Arm East, Gloucester Docks, GL1 2DQ

01452 398010

docks@naylorpowell.com

www.naylorpowell.com





Whilst every attempt has been made to ensure the accuracy of the floorplan contained here, measurements of doors, windows, rooms and any other items are approximate and no responsibility is taken for any error, omission or mis-statement. This plan is for illustrative purposes only and should be used as such by any prospective purchaser. The services, systems and appliances shown have not been tested and no guarantee as to their operability or efficiency can be given.
Made with Metropix (©2020)

Disclaimer: These particulars do not form part of any contract and no responsibility is accepted for any errors or omissions in any statement made, whether verbally or written for or on behalf of Naylor Powell.

Floorplans have been prepared for identification purposes only, they are not to scale and no guarantee can be given as to their accuracy.

Prospective purchasers please be aware none of the appliances, boiler, heaters etc. which may have been mentioned in these particulars have been tested and no guarantee can be given that they are in working order. Prospective purchasers should arrange for such items to be tested at their own expense.

