



Hawthorn Rise, Stroud GL5 4QR

£115,000



Hawthorn Rise, Stroud GL5 4QR

- First floor mainsonette
- Double bedroom
- Garden space located out the front of the property
- One allocated parking space
- Opportunity to add your own stamp
- Chain free
- Ground rent of approximately £15 per annum

£115,000

Entrance Hall

uPVC double-glazed door to entrance hall and stairs rising to the first floor.

Landing

Single-glazed window to side elevation. Access to accommodation.

Living Room/Diner

uPVC double-glazed window to rear elevation. Access to kitchen.

Kitchen

uPVC double-glazed window to rear elevation. Rang of wall and base units with stainless steel sink with mixer tap and drainer.

Bedroom

uPVC double-glazed window to front elevation.

Bathroom

uPVC double-glazed window to front elevation. Low-level WC, wash hand basin and bath. Storage cupboard.

Outside

The property has one allocated off road parking space. The front garden is laid to lawn.

Location

The property is located in Cashes Green, there are local amenities such as the Co-Operative supermarket, coffee bars, and hairdressers. Foxmoor Primary School is within walking distance. Other schools such as Cashes Green Primary School, Archway Secondary School, Marling Grammar for boys and Stroud High for Girls can be found nearby.

Material Information

Tenure: Leasehold - 999 years from December 1977 with 978 years remaining.

Ground rent: approximately £15 per annum.

Council tax band: A.

Local authority and rates: Stroud District Council - £1,517.75 (2025/26).

Electricity supply: mains.

Water supply: mains.

Sewerage: mains.

Heating: no heating.

Broadband speed: 7 Mbps (basic) and 68 Mbps (superfast).

Mobile phone coverage: EE, Three, O2 and Vodafone.



Regent House, 1 Bath Road, Stonehouse, GL10 2JD

01453 827640

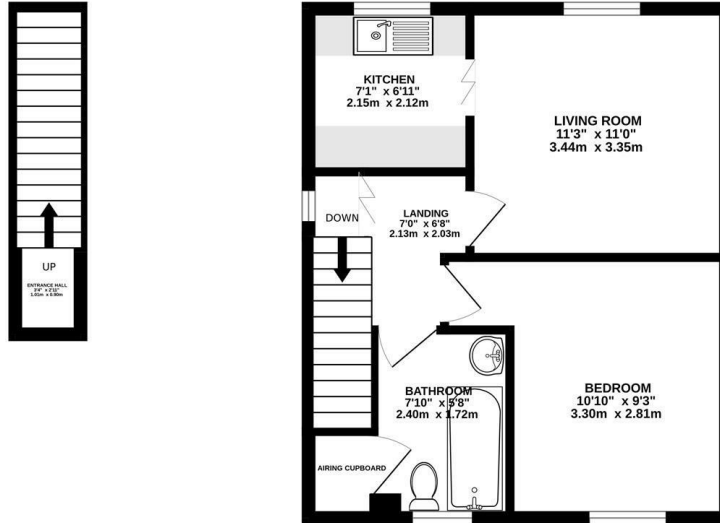
stonehouse@naylorpowell.com

www.naylorpowell.com



GROUND FLOOR
40 sq.ft. (3.7 sq.m.) approx.

1ST FLOOR
394 sq.ft. (36.5 sq.m.) approx.



TOTAL FLOOR AREA : 434 sq.ft. (40.3 sq.m.) approx.

Whilst every attempt has been made to ensure the accuracy of the floorplan contained here, measurements of doors, windows, rooms and any other items are approximate and no responsibility is taken for any error, omission or mis-statement. This plan is for illustrative purposes only and should be used as such by any prospective purchaser. The services, systems and appliances shown have not been tested and no guarantee as to their operability or efficiency can be given.
Made with Metropix v2025

Disclaimer: These particulars do not form part of any contract and no responsibility is accepted for any errors or omissions in any statement made, whether verbally or written for or on behalf of Naylor Powell.

Floorplans have been prepared for identification purposes only, they are not to scale and no guarantee can be given as to their accuracy.

Prospective purchasers please be aware none of the appliances, boiler, heaters etc. which may have been mentioned in these particulars have been tested and no guarantee can be given that they are in working order. Prospective purchasers should arrange for such items to be tested at their own expense.

