



**The Beagles, Cashes Green GL5 4SE**

**£339,950**



## The Beagles, Cashes Green GL5 4SE

- Extended detached house with front, side and rear gardens
- Four sizeable bedrooms to include master with far reaching views
- Well-proportioned accommodation throughout with social kitchen/diner space

**£339,950**

### Porch

uPVC double-glazed window to front elevation and uPVC door to lobby. Access to living room.

### Living Room

uPVC double-glazed window to front elevation. Access to utility room, dining room and stairs rising to the first floor. Radiator.

### Kitchen/Diner

uPVC double-glazed window to rear elevation. Range of wall and base units with appliances to include stainless steel two bowl sink with mixer tap and drainer, four ring gas hob, double oven, integrated under-counter fridge and dishwasher. Access to rear lobby and shower room. Radiator.

### Utility Room

uPVC door to side elevation and uPVC double-glazed window to rear lobby. Sink with mixer tap and drainer, worktop and plumbing for washing machine. Two storage areas. Radiator.

### Rear Lobby

uPVC double-glazed sliding door to side and rear elevation and uPVC double-glazed door to kitchen/diner.

### Shower Room

Sliding door to hallway and sliding door to shower room. Low-level WC, wash hand basin and shower cubicle. Radiator.

### Bedroom One

uPVC double-glazed window to front elevation. Radiator.

### Bedroom Two

uPVC double-glazed window to rear elevation. Radiator.

### Bedroom Three

uPVC double-glazed window to rear and side elevation. Radiator.

### Bedroom Four

uPVC double-glazed window to front elevation. Radiator.

### Bathroom

uPVC double-glazed window to side elevation. Low-level WC, wash hand basin and bath with shower over. Heated towel rail.

### Outside

The front of the property is access via a public



Regent House, 1 Bath Road, Stonehouse, GL10 2JD

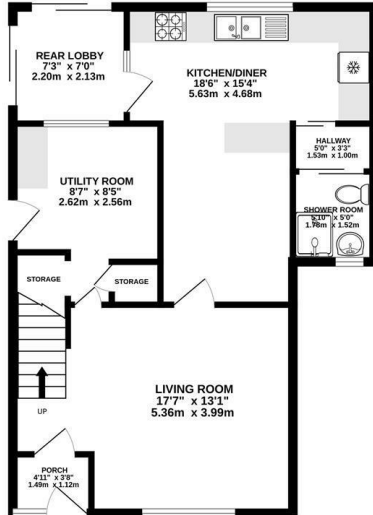
01453 827640

stonehouse@naylorpowell.com

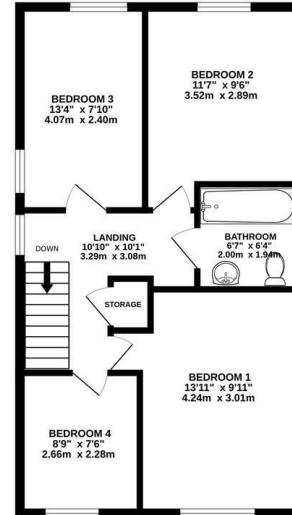
www.naylorpowell.com



GROUND FLOOR  
624 sq.ft. (58.0 sq.m.) approx.



1ST FLOOR  
544 sq.ft. (50.6 sq.m.) approx.



TOTAL FLOOR AREA: 1168 sq.ft. (108.5 sq.m.) approx.

While every attempt has been made to ensure the accuracy of the floorplan contained here, measurements of doors, windows, rooms and any other items are approximate and no responsibility is taken for any error, omission or mis-statement. This plan is for illustrative purposes only and should be used as such by any prospective purchaser. The services, systems and appliances shown have not been tested and no guarantee as to their operability or efficiency can be given.  
Made with Metropac ©2012

Disclaimer: These particulars do not form part of any contract and no responsibility is accepted for any errors or omissions in any statement made, whether verbally or written for or on behalf of Naylor Powell.

Floorplans have been prepared for identification purposes only, they are not to scale and no guarantee can be given as to their accuracy.

Prospective purchasers please be aware none of the appliances, boiler, heaters etc. which may have been mentioned in these particulars have been tested and no guarantee can be given that they are in working order. Prospective purchasers should arrange for such items to be tested at their own expense.

