



Goldfinch Edge, Dursley GL11 5FP
£375,000



Goldfinch Edge, Dursley GL11 5FP

• Detached property built in 2021 • Two double bedrooms and a single bedroom • 6 years remaining on the NHBC warranty • Ensuite to master bedroom • Detached single garage and driveway parking for two vehicles • Within close proximity to Cam train station • Freehold • Council tax band D (£2,342.89) • EPC rating A93



Regent House, 1 Bath Road, Stonehouse, GL10 2JD

01453 827640

stonehouse@naylorpowell.com

www.naylorpowell.com

£375,000

Entrance Hall

Composite front door with access to living room, kitchen/diner and cloakroom/utility, and stairs rising to the first floor. Cupboard and radiator.

Living Room

uPVC double-glazed window to the front aspect and uPVC double-glazed French doors to the rear with access to the garden. Radiator.

Kitchen/Diner

uPVC double-glazed window to the front elevation and uPVC double-glazed French doors to the rear. There are a range of wall and base units and integrated appliances to include a five ring gas hob, fridge freezer and dishwasher. There is a one and a half bowl sink with mixer tap. Radiator.

Cloakroom/Utility Room

uPVC double-glazed window to the rear, worktop to include sink with mixer tap and a wall mounted cupboard. There is plumbing for an under-counter washing machine and tumble drier. Low level WC and radiator.

Bedroom One

uPVC double-glazed window to rear with built-in wardrobes and access to the en-suite shower room. Radiator.

Ensuite

uPVC double-glazed window to the front, with low level WC, pedestal wash handbasin, shower cubicle and heated towel rail.

Bedroom Two

uPVC double glazed window to the front elevation, radiator.

Bedroom Three

uPVC double-glazed window to the rear, radiator.

Bathroom

uPVC double-glazed window to the front, low level WC, vanity sink, bath with shower over and heated towel rail.

Outside

To the front of the property, there is a low hedge, with paved path. The driveway to the side of the property provides off-road parking for two vehicles. There is a detached garage with gated access from the driveway to the rear garden, which is mainly laid to lawn. There is a patio area as well as a gravelled area

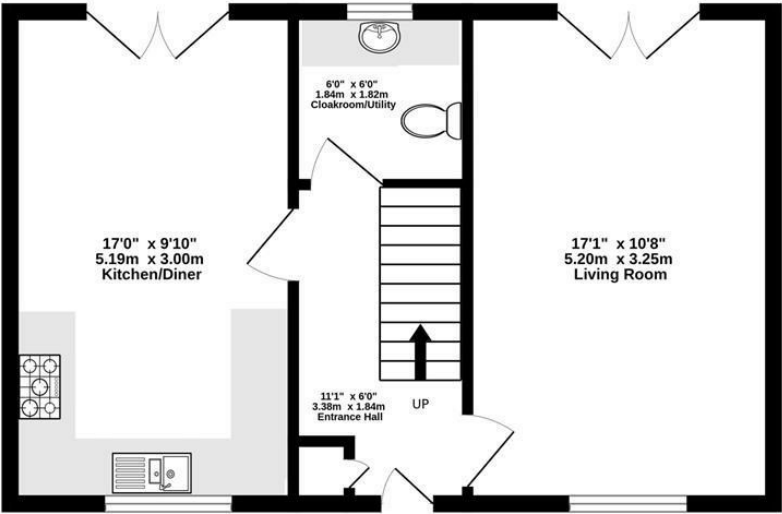
Location

Cam offers a community feel and provides for most of your shopping requirements by way of a supermarket, two pubs and a national award winning butchers. There are also a wide range of sports clubs, leisure facilities and public play areas. Cam has good motorway access by way of the M5, providing good links to Bristol, Gloucester and Cheltenham. Cam and Dursley train station is nearby offering local services to Bristol, Gloucester and beyond. There are plenty of primary schools to choose from as there are five in the local area, Rednock School also offers secondary education.

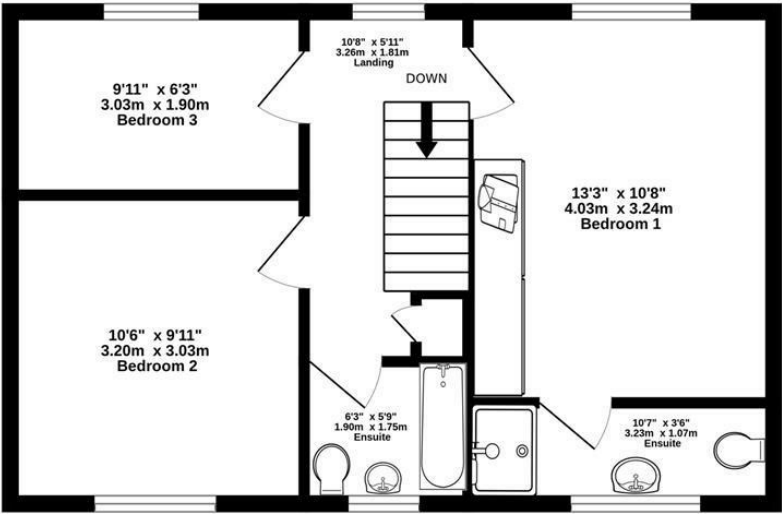
Material Information



GROUND FLOOR
452 sq.ft. (42.0 sq.m.) approx.



1ST FLOOR
452 sq.ft. (42.0 sq.m.) approx.



TOTAL FLOOR AREA : 904 sq.ft. (84.0 sq.m.) approx.

Whilst every attempt has been made to ensure the accuracy of the floorplan contained here, measurements of doors, windows, rooms and any other items are approximate and no responsibility is taken for any error, omission or mis-statement. This plan is for illustrative purposes only and should be used as such by any prospective purchaser. The services, systems and appliances shown have not been tested and no guarantee as to their operability or efficiency can be given.

Made with Metropix ©2025

Disclaimer: These particulars do not form part of any contract and no responsibility is accepted for any errors or omissions in any statement made, whether verbally or written for or on behalf of Naylor Powell.

Floorplans have been prepared for identification purposes only, they are not to scale and no guarantee can be given as to their accuracy.

Prospective purchasers please be aware none of the appliances, boiler, heaters etc. which may have been mentioned in these particulars have been tested and no guarantee can be given that they are in working order. Prospective purchasers should arrange for such items to be tested at their own expense.

