



20 Elmgrove Road, Hucclecote GL3 3RQ
£300,000



20 Elmgrove Road, Hucclecote GL3 3RQ



• Chain free • Located close to local amenities, schools and transport links • Good sized south facing rear garden • Extended living room • Gas central heating and double glazing • Off road parking • Downstairs WC and upstairs shower room • Well presented throughout • Gloucester City Council, Tax Band B - £1,741.26 per annum (2025/26) • EPC rating D57

59 Hucclecote Road, Hucclecote, Gloucestershire, GL3 3TL

£300,000

01452 941950

hucclecote@naylorpowell.com

www.naylorpowell.com

Entrance Hall

Stairs to the first floor, doors to all ground-floor accommodation, radiator cupboard.

Living Room/Garden Room

Double-glazed sliding doors to the rear, double-glazed window to the rear and side elevation, two radiators.

Kitchen/ Dining Room

Double-glazed windows to the front and rear elevations, a range of matching wall and base units with worktops over, integrated oven and hob, space for a dishwasher, inset 1 bowl sink, radiator. Door to;

Utility

Doors to front and rear gardens, power and light, plumbing and space for washing machine, wall-mounted gas boiler.

WC

WC

Garden Store

Window to side elevation

First Floor Landing

Double-glazed window to front elevation, doors to all bedrooms and shower room

Bedroom One

Double-glazed window to rear elevation, built in wardrobe.

Bedroom Two

Double-glazed window to rear elevation, built-in wardrobes, radiator.

Bedroom Three

Double-glazed window to front elevation

Shower Room

Freestanding shower cubicle, WC, wash hand basin, radiator, double-glazed window to side elevation.

Outside

To the front of the property is off-road parking for a couple of vehicles, a gravelled area, and mature shrub borders.

The rear garden is south-facing with a variety of mature trees, shrubs, and plants, a paved patio area, and a path that leads the full length of the property.

Location

Located southeast of the historic Gloucester City Centre, Elmgrove Road is located within the popular area of Hucclecote. Various local amenities include Dinglewell Junior School as well as access to a number of secondary and grammar schools located within the city. A short distance away is access to the M5, providing ideal links to Birmingham and Bristol, while a direct line to London Paddington can be located at Gloucester Station. While the immediate locality offers various walks and open spaces within arguably one of Gloucester's most desirable established residential areas. Access to the Countryside is a short walk or cycle ride away, as well as a children's play area, Hucclecote Green, and meadows within close proximity.

Material Information

Property Construction: This property was originally built as a Hawksley Construction but has been rebricked since with the relevant certificate.

Tenure: Freehold.

Council Tax band: B

Local authority and rates: Gloucester City Council - £1,741.26 per annum (2025/26)

Electricity supply: Mains

Water supply: Mains

Sewerage: Mains

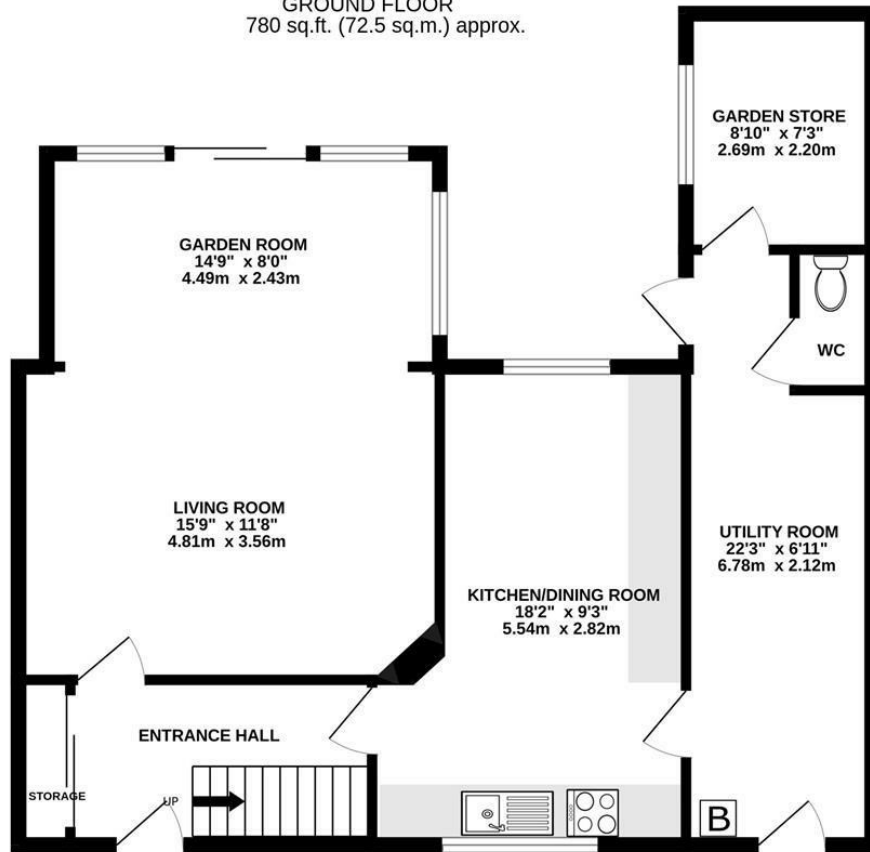
Heating: Gas Central

Broadband speed: Standard 14 Mbps, Superfast 73 Mbps and Ultrafast 1000 Mbps

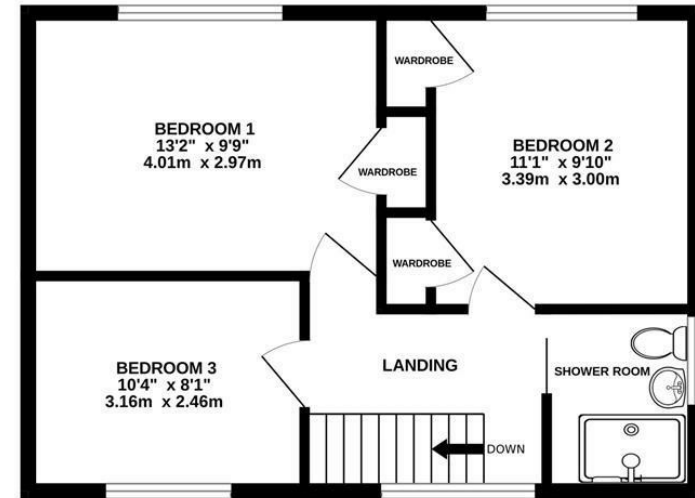
Mobile phone coverage: Vodafone (Limited), O2 (Limited), EE (Limited) and Three (Limited).



GROUND FLOOR
780 sq.ft. (72.5 sq.m.) approx.



1ST FLOOR
448 sq.ft. (41.6 sq.m.) approx.



TOTAL FLOOR AREA : 1228 sq.ft. (114.1 sq.m.) approx.

Whilst every attempt has been made to ensure the accuracy of the floorplan contained here, measurements of doors, windows, rooms and any other items are approximate and no responsibility is taken for any error, omission or mis-statement. This plan is for illustrative purposes only and should be used as such by any prospective purchaser. The services, systems and appliances shown have not been tested and no guarantee as to their operability or efficiency can be given.
Made with Metropix ©2025

Disclaimer: These particulars do not form part of any contract and no responsibility is accepted for any errors or omissions in any statement made, whether verbally or written for or on behalf of Naylor Powell.

Floorplans have been prepared for identification purposes only, they are not to scale and no guarantee can be given as to their accuracy.

Prospective purchasers please be aware none of the appliances, boiler, heaters etc. which may have been mentioned in these particulars have been tested and no guarantee can be given that they are in working order. Prospective purchasers should arrange for such items to be tested at their own expense.

