



68 Stocken Close, Hucclecote GL3 3UL
£430,000



68 Stocken Close, Hucclecote GL3 3UL



• Chain free • Well-maintained property • Two en-suites • Utility Room and downstairs WC • Close to local schools and amenities • Four double bedrooms • Private garden • Garage • Tewkesbury Borough Council - Tax Band E (£2,702.44 per annum 2025/2026) • EPC rating D67

59 Hucclecote Road, Hucclecote, Gloucestershire, GL3 3TL

£430,000

01452 941950
hucclecote@naylorpowell.com
www.naylorpowell.com

Entrance Hall

Stairs to the first floor, door to kitchen, door to living room, door to;

Study

Double-glazed window to front elevation, radiator.

Kitchen

Double-glazed window to front elevation, radiator, a range of matching wall and base units with worktops over, one and a half bowl sink with drainer unit, Four-ring gas hob, space for fridge freezer, space for dishwasher, access to;

Utility Room

Base unit with worktop over, stainless steel one-bowl sink with drainer unit, boiler, door to rear garden, radiator, door to;

WC

Radiator, WC, handwash basin with base unit.

Dining Room

Double-glazed window to rear elevation, radiator, access to;

Living Room

Double-glazed sliding door to rear garden, radiators, fireplace, door to;

Play Room

Double-glazed window to front elevation, radiator, door to;

Garage

Power and light, garage doors.

On the first floor

Landing

Grants access to all bedrooms and the bathroom, storage cupboard.

Bedroom One

Double-glazed window to front elevation, radiator, built-in wardrobe, door to;

Ensuite

Double-glazed obscure window to front elevation, radiator, shower cubicle, WC, handwash basin.

Bedroom Two

Double-glazed window to rear elevation, radiator, built in wardrobe, door to;

Ensuite

WC, shower cubicle, handwash basin with base unit.

Bedroom Three

Double-glazed window to rear elevation, radiator, built-in wardrobe.

Bedroom Four

Double-glazed window to front elevation, radiator.

Bathroom

Double-glazed obscure window to side elevation, bath, WC, handwash basin with base unit, radiator.

Outside

At the front of the property, a paved path leads to the front door, met by a lawn on each side. The property is enclosed by hedges, providing a natural border. To the rear of the property is an off-road parking space and a private garden with a patio seating area, decking, and a manageable lawn area.

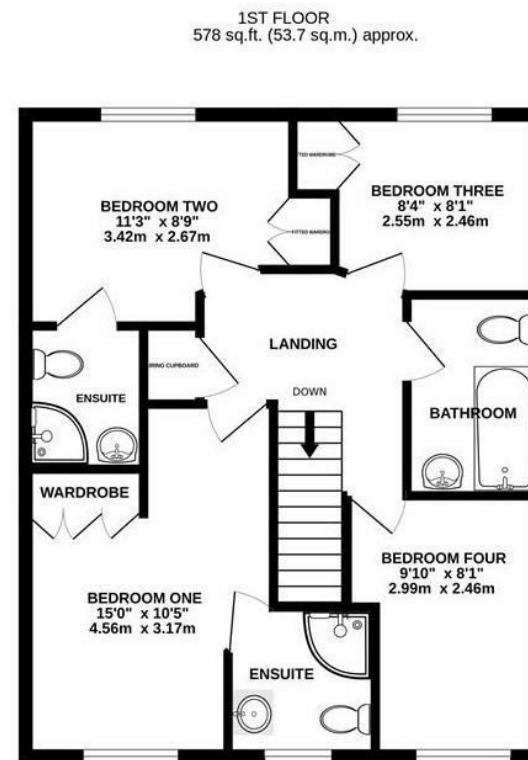
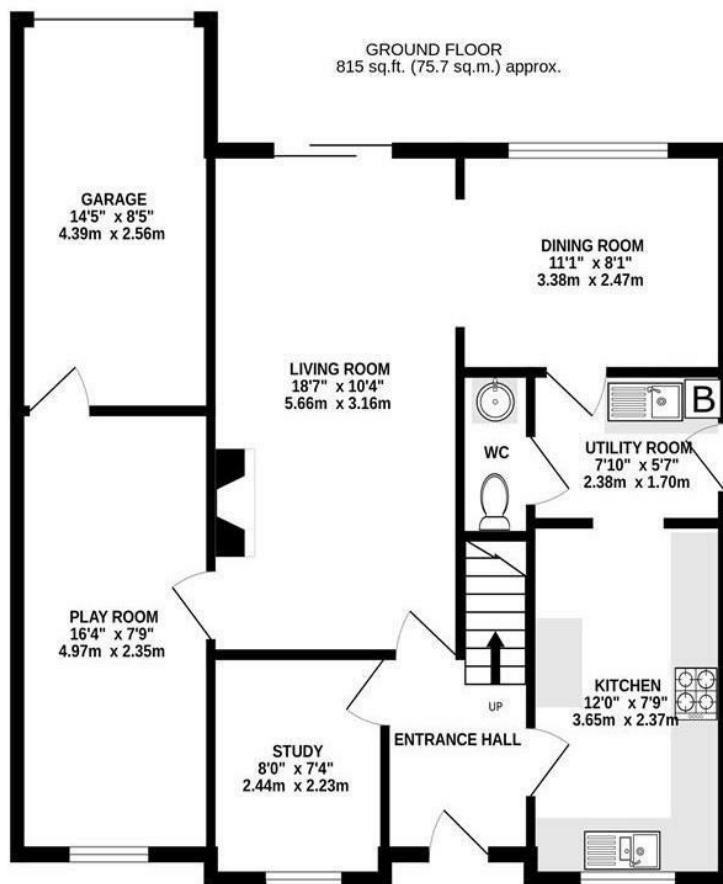
Location

Stocken Close is located within the popular area of Hucclecote. Various local amenities include the local junior schools Hillview and Dinglewell as well as access to a number of secondary and grammar schooling being located within the City.

Material Information

Tenure: Freehold.
Council Tax band: Tax band E
Local authority and rates: Tewkesbury Borough Council - (£2,702.44 per annum 2025/2026)
Electricity supply: Mains
Water supply: Mains
Sewerage: Mains
Heating: Gas Central heating.
Broadband speed: Standard: 11Mbps, Superfast: 74 Mbps, Ultrafast: 1000Mbps.
Mobile phone coverage: EE(Likely) Three(Likely) 02(Likely) Vodafone(Likely).





TOTAL FLOOR AREA : 1393 sq.ft. (129.4 sq.m.) approx.

Whilst every attempt has been made to ensure the accuracy of the floorplan contained here, measurements of doors, windows, rooms and any other items are approximate and no responsibility is taken for any error, omission or mis-statement. This plan is for illustrative purposes only and should be used as such by any prospective purchaser. The services, systems and appliances shown have not been tested and no guarantee as to their operability or efficiency can be given.
Made with Metropix ©2025

Disclaimer: These particulars do not form part of any contract and no responsibility is accepted for any errors or omissions in any statement made, whether verbally or written for or on behalf of Naylor Powell.

Floorplans have been prepared for identification purposes only, they are not to scale and no guarantee can be given as to their accuracy.

Prospective purchasers please be aware none of the appliances, boiler, heaters etc. which may have been mentioned in these particulars have been tested and no guarantee can be given that they are in working order. Prospective purchasers should arrange for such items to be tested at their own expense.

