



**147 Chosen Way, Hucclecote GL3 3BY**  
**£285,000**



# 147 Chosen Way, Hucclecote GL3 3BY

• Chain free • Ample off road parking • Three double bedrooms • Close to local amenities • Garage with power and light • Semi-detached house • Viewing recommended • Extended kitchen/dining room • Gloucester City Council - Tax band C (£1990.01 2026/2027) • EPC Rating D68



59 Hucclecote Road, Hucclecote, Gloucestershire, GL3 3TL

01452 941950

[hucclecote@naylorpowell.com](mailto:hucclecote@naylorpowell.com)

[www.naylorpowell.com](http://www.naylorpowell.com)

**£285,000**

## Entrance Hallway

Stairs to the first floor and doors to the kitchen, shower room, WC, and living room.

## Living Room

UPVC double-glazed windows to front elevation, radiator, fireplace.

## Kitchen

A range of matching wall and base units with work surfaces over, inset sink and drainer, cooker point, space for appliances, vinyl flooring, airing cupboard and further storage cupboard, open to;

## Dining Room

UPVC double-glazed sliding door to rear elevation and frosted UPVC double-glazed window to the side elevation, roof light, vinyl flooring.

## Shower Room

Handwash basin, shower cubicle, heated towel rail, obscure double-glazed window to rear elevation.

## WC

WC, handwash basin, obscure double-glazed window to side elevation

## First Floor Landing

Radiator, doors leading to all bedrooms.

## Bedroom One

Double-glazed window to front elevation, radiator, built-in wardrobes, door to;

## Ensuite WC

WC, handwash basin.

## Bedroom Two

Double-glazed window to rear and side elevations, radiator, handwash basin, built-in wardrobes.

## Bedroom Three

Double-glazed window to rear elevation, radiator, handwash basin, boiler, built-in wardrobe.

## Outside

To the front of the property is a tarmac driveway for multiple cars, a lawn area

and access to the garage. There is a side access leading to the rear garden that offers a variety of mature planting and several different areas to enjoy, including a lawned area, a paved patio, a summerhouse, and two greenhouses. There is outside lighting, power and a tap.

## Garage

Stable doors, power and light.

## Location

Located southeast of the historic Gloucester City Centre, the popular area of Hucclecote has lots to offer with an array of shops, transport links, and schools. Various local amenities include the local Dinglewell and Hillview junior schools as well as access to several secondary and grammar schools being located within the city. A short distance away is access to the M5, providing ideal links to Birmingham and Bristol, whilst a direct line to London Paddington can be located at Gloucester Station. There are also regular bus services to both Cheltenham and Gloucester. The immediate locality offers various walks and open spaces within arguably one of Gloucester's most desirable established residential areas. Access to the countryside is a short walk or cycle ride away, as well as a children's play area, Hucclecote Green, and meadows within close proximity.

## Material Information

Tenure: Freehold.

Council Tax Band: Tax Band C

Local Authority and Rates: Gloucester City Council; £2098.85 (2026/2027)

Electricity supply: Mains

Water supply: Mains

Sewerage: Mains

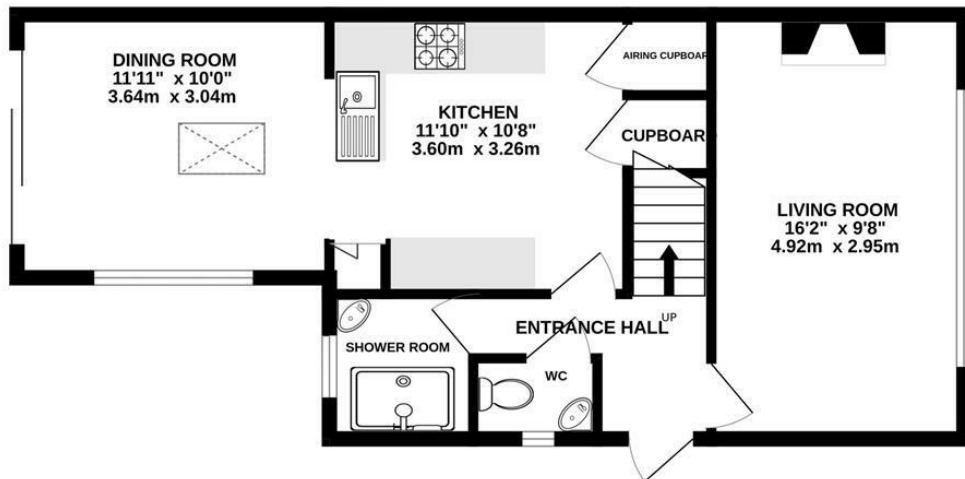
Heating: Gas central heating

Broadband speed: Standard 17 Mbps, Superfast 67 Mbps, Ultrafast 1000 Mbps

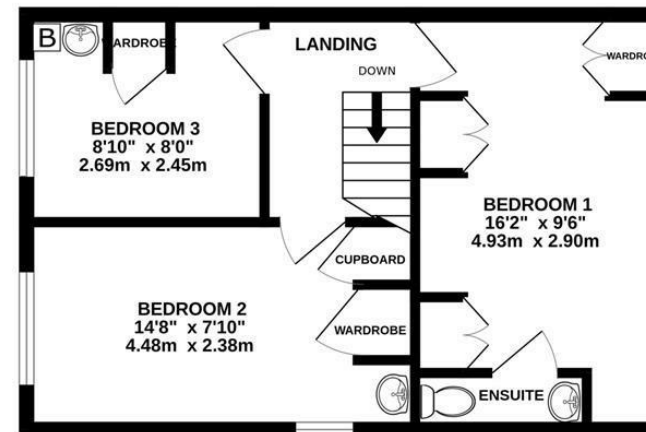
Mobile phone coverage: EE(Likely), Three(Likely), 02(Likely) and Vodafone(Likely)



**GROUND FLOOR**  
509 sq.ft. (47.3 sq.m.) approx.



**1ST FLOOR**  
386 sq.ft. (35.9 sq.m.) approx.



**TOTAL FLOOR AREA : 895 sq.ft. (83.1 sq.m.) approx.**

Whilst every attempt has been made to ensure the accuracy of the floorplan contained here, measurements of doors, windows, rooms and any other items are approximate and no responsibility is taken for any error, omission or mis-statement. This plan is for illustrative purposes only and should be used as such by any prospective purchaser. The services, systems and appliances shown have not been tested and no guarantee as to their operability or efficiency can be given.  
Made with Metropix ©2025

Disclaimer: These particulars do not form part of any contract and no responsibility is accepted for any errors or omissions in any statement made, whether verbally or written for or on behalf of Naylor Powell.

Floorplans have been prepared for identification purposes only, they are not to scale and no guarantee can be given as to their accuracy.

Prospective purchasers please be aware none of the appliances, boiler, heaters etc. which may have been mentioned in these particulars have been tested and no guarantee can be given that they are in working order. Prospective purchasers should arrange for such items to be tested at their own expense.

