



27 Fosse Close, Abbeymead GL4 5EF
£425,000



27 Fosse Close, Abbeymead GL4 5EF

• Chain-free • Immaculately presented • Off road parking • Open plan • Private rear garden • Close to local schools and amenities • Utility room • Garage • EPC Rating C70 • Gloucester City Council; Tax Band C - £1,990.01 (2025/2026)

£425,000



59 Hucclecote Road, Hucclecote, Gloucestershire, GL3 3TL

01452 941950

hucclecote@naylorpowell.com

www.naylorpowell.com

Entrance Hall

Stairs to the first floor, door to kitchen/diner/living room, door to;

WC

Heated towel rail, WC, hand wash basin.

Kitchen/Diner/Living room

Double-glazed windows to front and rear elevation, radiators, storage cupboard, sliding door to conservatory, a range of matching wall and base units with worktops over, black composite one and a half bowl sink with drainer unit, four-ring induction hob, integrated dishwasher, space for fridge freezer, door to;

Utility Room

Double-glazed window to rear elevation, door to rear garden, radiator, matching wall and base unit with worktop over, space for washing machine and dryer.

Conservatory

Double-glazed windows to rear and side elevations, French doors to rear garden.

Garage

Electric garage door, power and light.

On The First Floor

Landing

Grants access to all bedrooms and the bathroom.

Bedroom 1

Double-glazed windows to front and rear elevations, radiators, high ceiling.

Bedroom 2

Double-glazed window to front elevation, radiator.

Bedroom 3

Double-glazed window to rear elevation, radiator.

Bedroom 4

Double-glazed window to front elevation, radiator.

Bathroom

Double-glazed obscure window to rear elevation, heated towel rail, WC, shower cubicle, handwash basin with base unit.

Outside

To the front of the property is a brick-paved driveway providing off-road parking and an artificial lawn space. At the rear of the property is a combination of a patio seating area and a turf lawn, bordered by a range of trees and shrubs.

Location

The ever popular suburb of Abbeymead is situated on the outskirts of Gloucester City Centre offering various amenities including a Morrisons superstore, restaurants, schooling and public transport links to include the Gloucester bus routes to the nearly renovated City Centre station. The historic City Centre, to include the medieval Cathedral, offers further shops, boutiques and eateries alongside the recently developed Gloucester Docks and Quays shopping destination.

Material Information

Tenure: Freehold.

Council Tax band: C

Local authority and rates: Gloucester City Council - £1,990.01 per annum (2025/26)

Electricity supply: Mains

Water supply: Mains

Sewerage: Mains

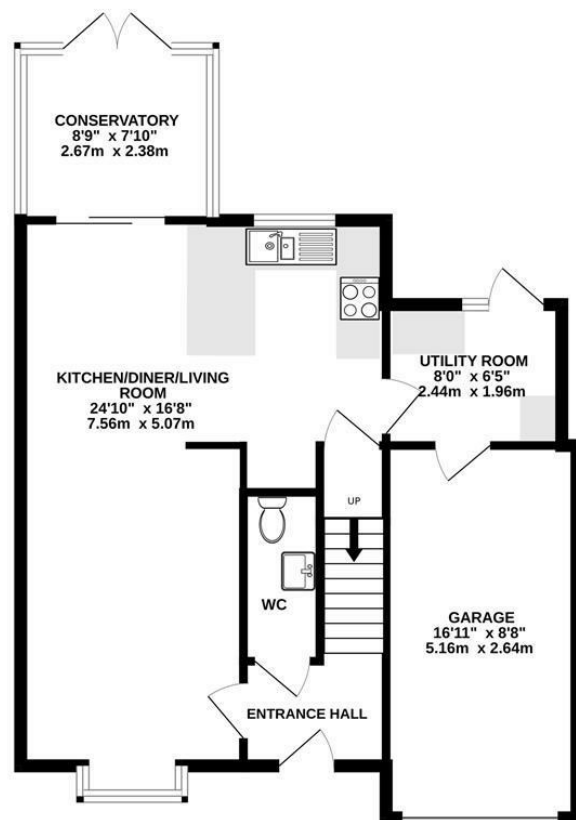
Heating: Gas Central

Broadband speed: Standard 14 Mbps, Superfast 80 Mbps and Ultrafast 1000 Mbps

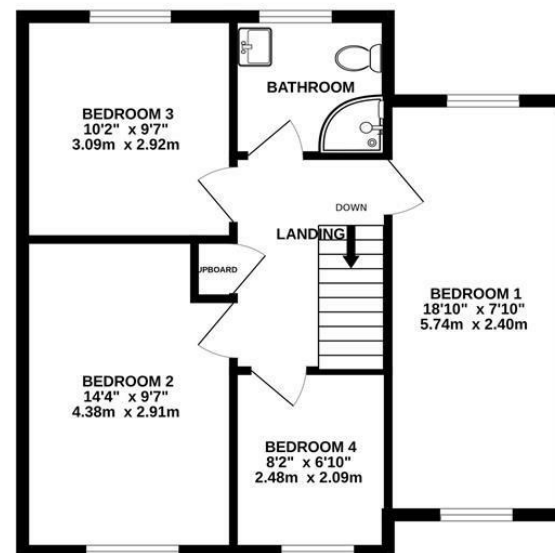
Mobile phone coverage: Vodafone (Likely), O2 (Likely), EE (Likely) and Three (Likely).



GROUND FLOOR
683 sq.ft. (63.4 sq.m.) approx.



1ST FLOOR
554 sq.ft. (51.5 sq.m.) approx.



TOTAL FLOOR AREA : 1237 sq.ft. (114.9 sq.m.) approx.

Whilst every attempt has been made to ensure the accuracy of the floorplan contained here, measurements of doors, windows, rooms and any other items are approximate and no responsibility is taken for any error, omission or mis-statement. This plan is for illustrative purposes only and should be used as such by any prospective purchaser. The services, systems and appliances shown have not been tested and no guarantee as to their operability or efficiency can be given.
Made with Metropix ©2025

Disclaimer: These particulars do not form part of any contract and no responsibility is accepted for any errors or omissions in any statement made, whether verbally or written for or on behalf of Naylor Powell.

Floorplans have been prepared for identification purposes only, they are not to scale and no guarantee can be given as to their accuracy.

Prospective purchasers please be aware none of the appliances, boiler, heaters etc. which may have been mentioned in these particulars have been tested and no guarantee can be given that they are in working order. Prospective purchasers should arrange for such items to be tested at their own expense.

