



2 Beech Cottages, Stambridge Road

G R
GILBERT
& ROSE

2 Beech Cottages, Stambridge
Road
Rochford, Essex
SS4 2AX

Guide price £290,000



Guide Price £290,000 - £305,000

Do you love the countryside and a peaceful neighbourhood? This fantastic semi detached home is a great purchase for those with a young family and comes with an open planned kitchen/diner, spacious lounge, downstairs cloakroom, three double bedrooms and modern family shower room. The exterior is also desirable with ample off street parking to the rear and a great sized rear garden which is a great space to relax in your downtime. The location is perfect for those who love the countryside with fields surrounding you making it perfect for long scenic walks all year round, near bus connections and only a short walk from The Royal Oak and The Shepherd & Dog pub and restaurants.



Entrance

Entrance door to side into hallway comprising ceiling with pendant lighting, stairs leading to first floor landing, under stair storage cupboard, radiator, laminate flooring, doors to:

Downstairs Cloakroom

Two piece suite comprising wall mounted wash hand basin, low level w/c, double glazed window to side, smooth ceiling with ceiling light, radiator, carpeted flooring.

Kitchen

15'11" x 8'9" (4.86m x 2.68m)

Range of wall and base level units with laminate roll top work

surfaces above incorporating stainless steel sink and drainer unit, integrated oven with four ring gas hob above and extractor unit over, space for fridge freezer, space for washing machine, double glazed windows to front, smooth ceiling with ceiling light, partially tiled walls, radiator, linoleum flooring.

Lounge

15'11" x 13'2" (4.86m x 4.03m)

Double glazed windows to rear, double glazed French doors to rear leading to rear garden, coved cornice to smooth ceiling with pendant lighting, radiator, laminate flooring.

First Floor Landing

Ceiling with pendant lighting, loft access, airing cupboard, carpeted flooring, doors to:

Bedroom One

15'11" x 8'9" (4.87m x 2.67m)

Double glazed window to front, coved cornice to smooth ceiling with ceiling light, built in wardrobes, radiator, laminate flooring.

Bedroom Two

8'8" x 10'4" (2.66m x 3.15)

Double glazed window to rear, smooth ceiling with pendant light, radiator, laminate flooring.

Bedroom Three

6'10" x 10'3" (2.09m x 3.14m)

Double glazed window to rear, ceiling with ceiling light, radiator, carpeted flooring.

Bathroom

Three piece suite comprising walk in shower, wash hand basin set into vanity unit, concealed system w/c, extractor fan, chrome heated towel rail, double glazed obscure window to side, smooth ceiling with fitted spotlights, tiled walls, tiled flooring.

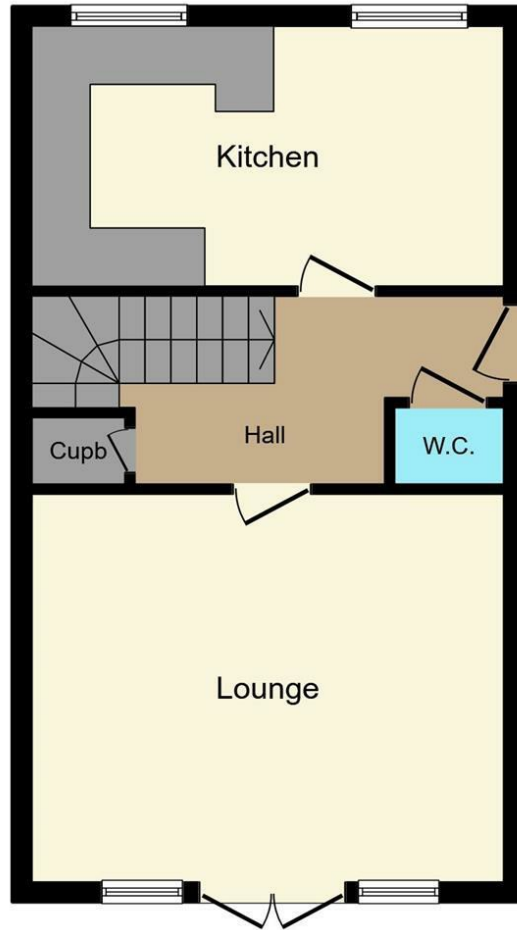
Rear Garden

Slab paved seating area with hardstanding pathway to side leading to gate at rear, remainder laid to lawn, shrub borders and flower beds to edges, outside lighting, outside tap, shed at rear to remain, side gated access to front garden, rear gated access leading to off street parking for two vehicles

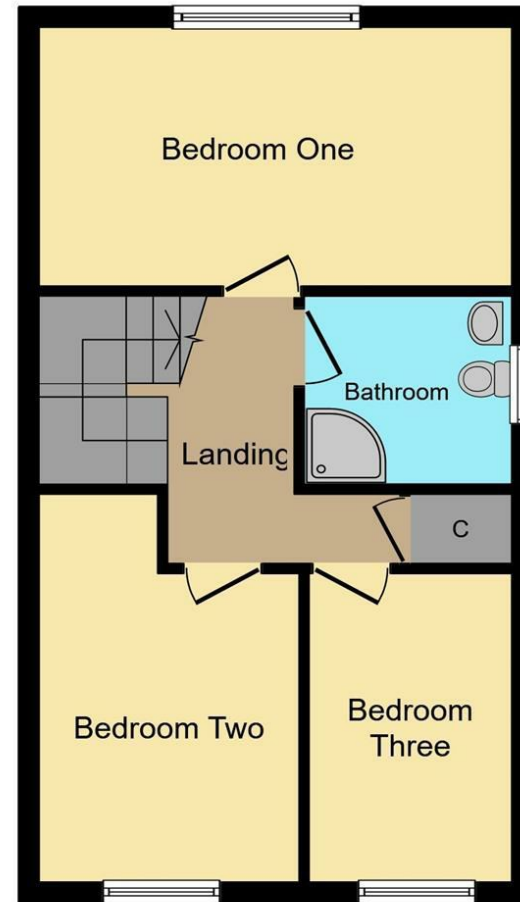
Front Garden

Laid to lawn, side gated access to rear garden.





Ground Floor



First Floor