



**WALTON  
ROBINSON**



**To Let**

## 63 Lonsdale Court, Jesmond NE2 3HF

£682 PCM

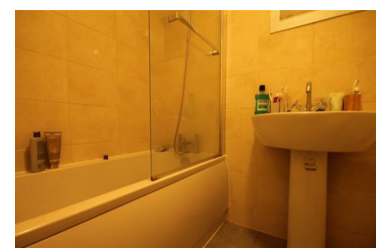
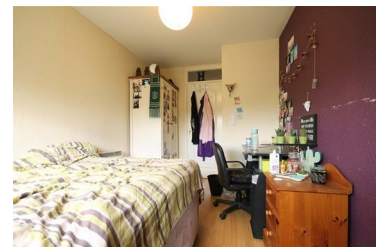


Top floor two bedroom apartment to rent in Lonsdale Court, Jesmond. The property is situated right next to West Jesmond metro station providing easy access into the City Centre for both professionals or students. There are also a number of amenities within close proximity with shops, restaurants and pubs nearby.

The property is comprised of two generous DOUBLE bedrooms, complete with bed, desk and wardrobe. There is a SPACIOUS lounge, which offers a large leather sofa and table & chairs with a small fitted kitchen running off it. The kitchen has all the essential appliances provided. To the middle of the property you will find the family bathroom, with shower over bath.

The property further benefits from UPVC double glazing and electric heating. For those with cars there is on street permit parking available.

- Fourth Floor Apartment
- Fitted Kitchen
- Electric Heating
- Permit Parking Available
- AVAIL 15/09/2021 - 31/08/2022
- Two Double Bedrooms
- Family Bathroom
- Entry Phone System
- Ideal Location



101 Percy Street, City Centre, Newcastle upon Tyne, NE1 7RY  
T: 01912431000 | Email: [enquiries@waltonrobinson.com](mailto:enquiries@waltonrobinson.com) | [www.waltonrobinson.com](http://www.waltonrobinson.com)