



**WALTON
ROBINSON**



To Let

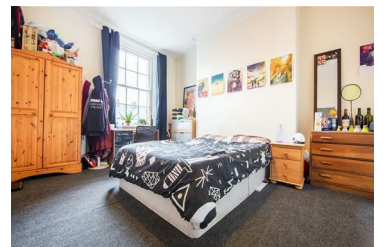
14 A Mistletoe Road, Jesmond NE2 2DX

£913 PCM



LOW DAMAGE DEPOSIT to pay on this three bedroom apartment to let in Central Jesmond. It features a spacious living room furnished with leather style sofas, coffee table, dining table and chairs, and has a 32" flat screen TV. The fitted kitchen contains integrated fridge and freezer, dishwasher, washing machine, hob and cooker, and microwave. The property comprises of three double bedrooms, all furnished with a bed, wardrobe, chest of drawers, study desk and chair. There are also a number of amenities on offer with shops, bars and restaurants all nearby.

- LOW DAMAGE DEPOSIT OF £150PP
- Shower Room
- 32" TV
- Fully Furnished
- Close to West Jesmond Metro
- Three Double Bedrooms
- Spacious Lounge
- Gas Central Heating
- Central Jesmond Location
- AVAIL 01/08/2021 - 30/07/2022



101 Percy Street, City Centre, Newcastle upon Tyne, NE1 7RY
T: 01912431000 | Email: enquiries@waltonrobinson.com | www.waltonrobinson.com