



**WALTON  
ROBINSON**



**To Let**

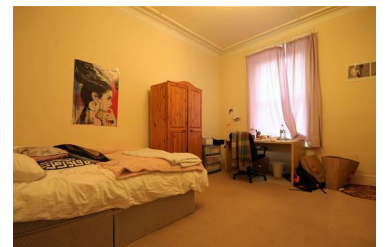
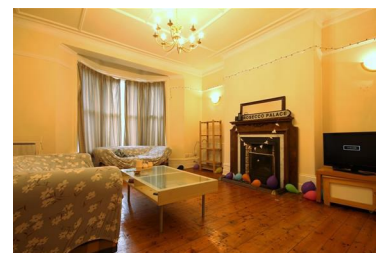
## 67 Fern Avenue Lower, Jesmond NE2 2QU

£773 PCM



GROUND FLOOR FLAT with TWO DOUBLE BEDROOMS and located in the highly popular FERN AVENUE in CENTRAL JESMOND. This great property is finished to a great standard and features polished wooden floorboards throughout. There is a SPACIOUS and MODERN kitchen, complete with all essential appliances and a tiled bathroom. With neutral decor and contemporary furnishings, this popular property is suitable for two students looking to be in an excellent Jesmond location close to local shops, bars and restaurants.

- LOW DAMAGE DEPOSIT
- Two Double Bedrooms
- Modern Fitted Kitchen
- Gas Central Heating
- Close to Osborne Road
- Ground Floor Flat
- Spacious Lounge
- Permit Parking Available
- Central Jesmond Location
- AVAIL 01/07/2021 - 29/06/2022



101 Percy Street, City Centre, Newcastle upon Tyne, NE1 7RY  
T: 01912431000 | Email: [enquiries@waltonrobinson.com](mailto:enquiries@waltonrobinson.com) | [www.waltonrobinson.com](http://www.waltonrobinson.com)