



**WALTON  
ROBINSON**



**To Let**

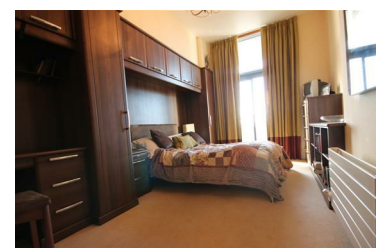
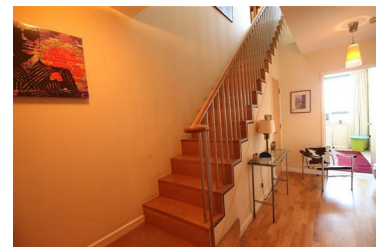
## P2 Lvl 10, 55 Degrees North, City Centre NE1 6BJ

£2,000 PCM



LUXURY PENTHOUSE APARTMENT with SECURE PARKING FOR TWO CARS included in the rental price! This great property boasts spectacular views across Newcastle City Centre which can be viewed from the TWO BALCONIES. This is a DUPLEX APARTMENT, split over TWO FLOORS. The living area / open plan kitchen occupies the top floor along with the master bedroom featuring en-suite bathroom. There are two bedrooms on the lower floor, one of which has an en-suite and the other has a separate bathroom. This apartment is highly desirable and is located in a perfect location close to Central Station, University campuses and fantastic City Centre amenities.

- Luxury Penthouse
- Fully Furnished
- Duplex Over 2 Floors
- Two En-Suite Bathrooms & Family Bathroom
- The bills package payable on this property is £20 pppw
- Three Spacious Double Bedrooms
- Panoramic City Views
- Secure Parking For 2 Cars
- Two Balconies
- AVAIL 07/10/2021



101 Percy Street, City Centre, Newcastle upon Tyne, NE1 7RY  
T: 01912431000 | Email: [enquiries@waltonrobinson.com](mailto:enquiries@waltonrobinson.com) | [www.waltonrobinson.com](http://www.waltonrobinson.com)