



**WALTON
ROBINSON**



To Let

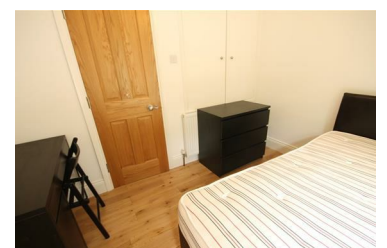
28 Copland Terrace, Shieldfield NE2 1YB

£1,477 PCM



NO AGENCY FEES TO PAY on this EXCEPTIONALLY HIGH STANDARD terraced house, located in the very convenient area of Shieldfield. Newly refurbished throughout, there is a FABULOUS OPEN PLAN kitchen / lounge with good quality appliances, fixtures and fittings. Featuring leather sofas, the living area leads to the back garden through french doors allowing plenty of natural light in to the communal space. With TWO BATHROOMS, this lovely property is perfect for a group of STUDENTS sharing. Each bedroom is a double size, with wardrobe and desk with chair.

- NO AGENCY FEES TO PAY
- Four Double Bedrooms
- Dishwasher
- Separate WC
- Walking to city centre
- Mid Link House
- Open Plan Kitchen and Lounge
- Shower room
- Double glazing and GCH
- AVAIL 24/08/2019-12/08/2020



101 Percy Street, City Centre, Newcastle upon Tyne, NE1 7RY
T: 01912431000 | Email: enquiries@waltonrobinson.com | www.waltonrobinson.com