



**WALTON  
ROBINSON**



**To Let**

## 2 George House, 36 Osborne Road NE2 2AL

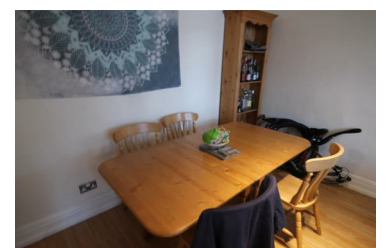
£2,581 PCM



George House is an extremely popular development of four apartments on Osborne Road. All apartments are fully furnished with high quality furniture including desks to each bedroom. George House is in a fantastic location close to the bars & restaurants of Jesmond as well as being within walking or cycling distance to the city centre for getting to University or socializing. The apartments on Osborne Road are also located between Jesmond and West Jesmond Metro stations for access to the city wide Metro network. Each apartment benefits from an allocated parking space.

\*Photos & 360 Virtual Tour show another apartment in the same development.\*

- Six Double Bedrooms
- Very Popular Student Development
- Located in Prime Jesmond
- Allocated Parking Space per Apartment
- On Street Permit Parking
- AVAIL 08/09/2021 - 07/09/2022
- 360 Degree Virtual Tour Available!
- High Quality Furnishings
- Close to West Jesmond Metro



101 Percy Street, City Centre, Newcastle upon Tyne, NE1 7RY  
T: 01912431000 | Email: [enquiries@waltonrobinson.com](mailto:enquiries@waltonrobinson.com) | [www.waltonrobinson.com](http://www.waltonrobinson.com)