



La Rochelle,
3 Winchester Street, JE2 4TH

Asking price £525,000



FREEHOLD - Reside are pleased to introduce La Rochelle, a stunning four bedroom house nestled in St Helier.

As you step inside, you are greeted by an open concept layout that maximises space and natural light. The living/kitchen area is the heart of the home, featuring large windows that allow plenty of light to flow through during the day, balanced with the warmth of the fireplace creating a bright and airy feel.

The fully equipped kitchen features neutral tones, and high-quality materials that define the interior.

There is plenty of storage under the stairs, and a utility cupboard. Leading through to the bedroom on the ground floor which can also be made into an office/snug.

Each of the 4 bedrooms is designed with comfort in mind. The master suite is a spacious room benefitting from built in wardrobe space. The second bedroom mirrors this design with large windows that allow sunlight to filter in. The recently modernised house bathroom offers minimalist fixtures and a soothing colour palette.

Leading onto the fourth bedroom which is situated in the eaves of the property. There is large amounts of storage and an exposed brick wall which adds a touch of rustic charm and texture to the space. The sloped ceilings and characteristics of this bedroom enhance the cosy tucked-away feel.

Externally, there is a charming south facing courtyard, a delightful extension of your living space designed for relaxation and enjoyment. The outdoor area is complemented by an external storage shed equipped with electrical outlets and an outdoor toilet adding both functionality and convenience.

No onward chain.

RES356



reside.je



info@reside.je



07797737773



reside.je



info@reside.je



07797737773



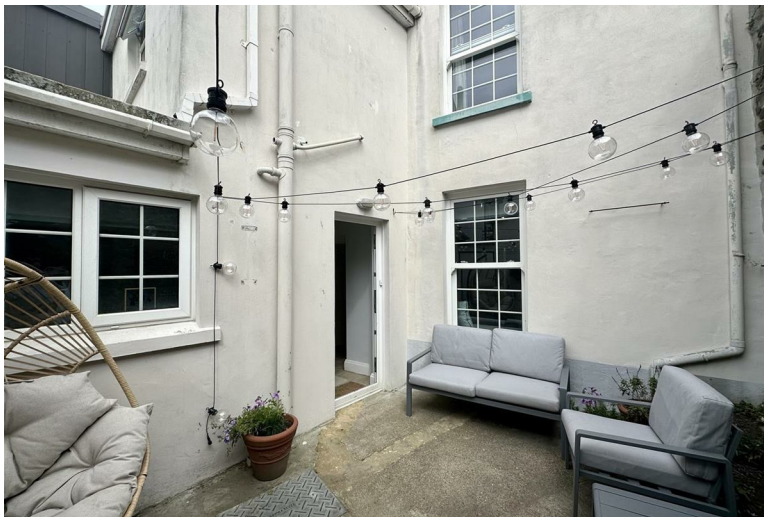
reside.je



info@reside.je



07797737773



reside.je



info@reside.je



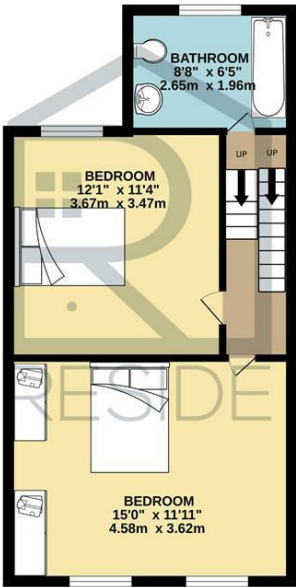
07797737773

Floor Plan

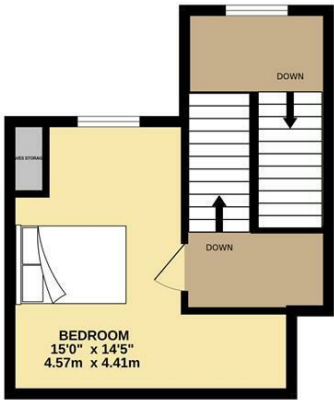
GROUND FLOOR
526 sq.ft. (48.9 sq.m.) approx.



1ST FLOOR
415 sq.ft. (38.6 sq.m.) approx.



2ND FLOOR
281 sq.ft. (26.2 sq.m.) approx.



TOTAL FLOOR AREA : 1223 sq.ft. (113.6 sq.m.) approx.

Whilst every attempt has been made to ensure the accuracy of the floorplan contained here, measurements of doors, windows, rooms and any other items are approximate and no responsibility is taken for any error, omission or mis-statement. This plan is for illustrative purposes only and should be used as such by any prospective purchaser. The services, systems and appliances shown have not been tested and no guarantee as to their operability or efficiency can be given.

Made with Metropix ©2024



reside.je



info@reside.je



07797737773

Key Information

- Four bedroom house in St Helier
- Well presented modern house
- Open plan living area
- South facing sunny courtyard
- External store shed with power outlets
- Walking distance to town

Directions

