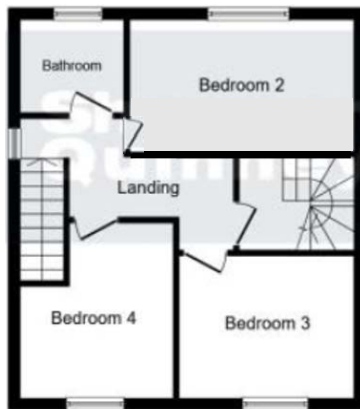


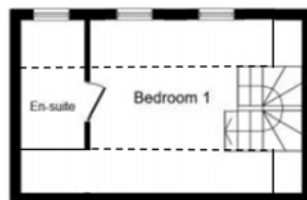
33 Gordon Road, Oundle



Ground Floor



First Floor



Second Floor

Lounge diner	4.06m x 6.91m (13'4" x 22'8")
Kitchen	6.48m x 3.53m (21'3" x 11'7")
Bedroom 2	4.09m x 2.67m (13'5" x 8'9")
Bedroom 3	3.15m x 2.62m (10'4" x 8'7")
Bedroom 4	3.12m x 2.79m (10'3" x 9'2")
Bedroom 1	4.37m x 4.04m (14'4" x 13'3")