



180 Barnsley Street

Springfield, Wigan, WN6 7HU

**Offers Around £129,950**



Sapphire Homes are pleased to be in a position to offer For Sale this generous two bedroom mid terrace property in popular residential location that must be internally viewed to be appreciate the potential in full. The property is in a popular residential location situated close by to local schools, churches, amenities and only a ten minute walk to Wigan town centre and Mesnes Park. The accommodation briefly comprises of entrance / hallway leading to a spacious lounge with separate dining room to the rear elevation and separate fitted kitchen to the rear with access leading to the rear garden. To the first floor there are 2 generous sized bedrooms and 3 piece suite bathroom suite with shower over bath. The property benefits from double glazed windows, gas central heating and would be an ideal home for first time buyer or buy to let investor. Externally there is a small garden to the front and the rear is patio garden with rear gate access. No Upward Chain.



GROUND FLOOR

Entrance / Hallway

Lounge

Reception 2

Kitchen

FIRST FLOOR

Landing

Master Bedroom

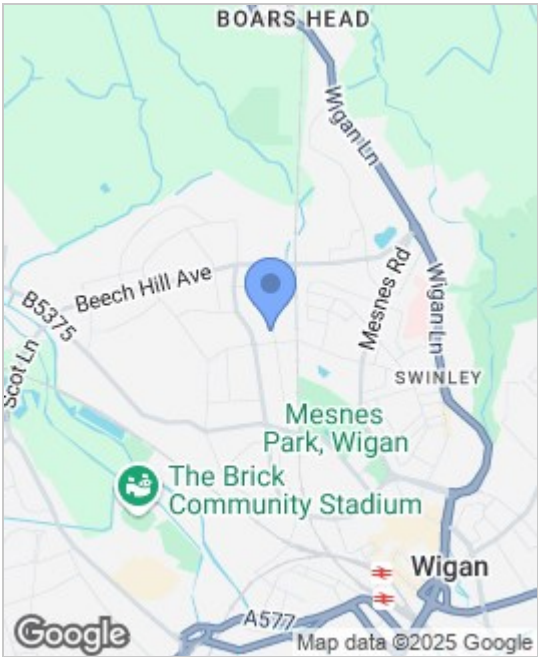
Bedroom 2

Bathroom

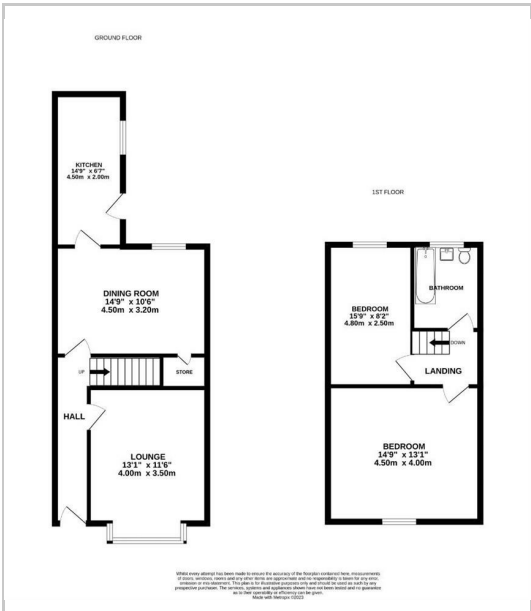
EXTERNAL

Rear Garden

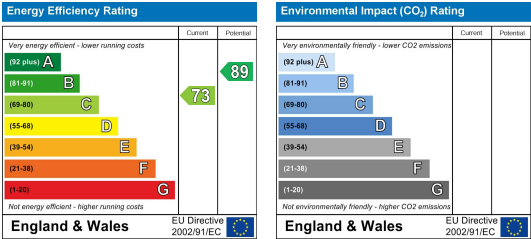
Area Map



Floor Plans



Energy Efficiency Graph



These particulars, whilst believed to be accurate are set out as a general outline only for guidance and do not constitute any part of an offer or contract. Intending purchasers should not rely on these particulars as a representation of fact, but must satisfy themselves by inspection or otherwise as to their accuracy. No person in this firm's employment has the authority to make or give any representation or warranty on behalf of the firm.

